

ACACIA GREEN ZONE | 431 S. ACACIA ST., WOODLAKE, CA 93286

Executive Summary



SALE PRICE

\$650,000

OFFERING SUMMARY

Lot Size: 1.24 Acres

Zoning: Light Industrial

Price / SF: \$12.03

APN: 060-250-006

PROPERTY OVERVIEW

1.24 acre property for sale in the City of Woodlake. This property is located in the Green Zone for Cannabis Businesses, allowing businesses to cultivate, manufacture, and distribute cannabis products. SCE power is located across the street and can be pulled to your facility. The City of Woodlake currently has no limits on the number of cultivation facilities allowed to operate in city limits, making licensing easier than most other cities. The property to the south already has a cultivation facility in operation, and construction will begin soon on another cultivation facility on the property to the north. Being surrounded by cultivation facilities should make for a cohesive relationship with neighboring businesses. The City of Woodlake is quickly becoming a cannabis-hub, and properties located in the Green Zone are becoming scarce. Call Marty Zeeb today to learn more about this opportunity before it's gone!

PROPERTY HIGHLIGHTS

- Located in Woodlake's Green Zone

DEMOGRAPHICS

	1 MILE	5 MILES	10 MILES
Total Households	1,399	3,556	13,209
Total Population	5,533	13,096	44,586

MARTY ZEEB SIOR
+15596252128 x11
zeeb@aol.com
CalDRE #00847045

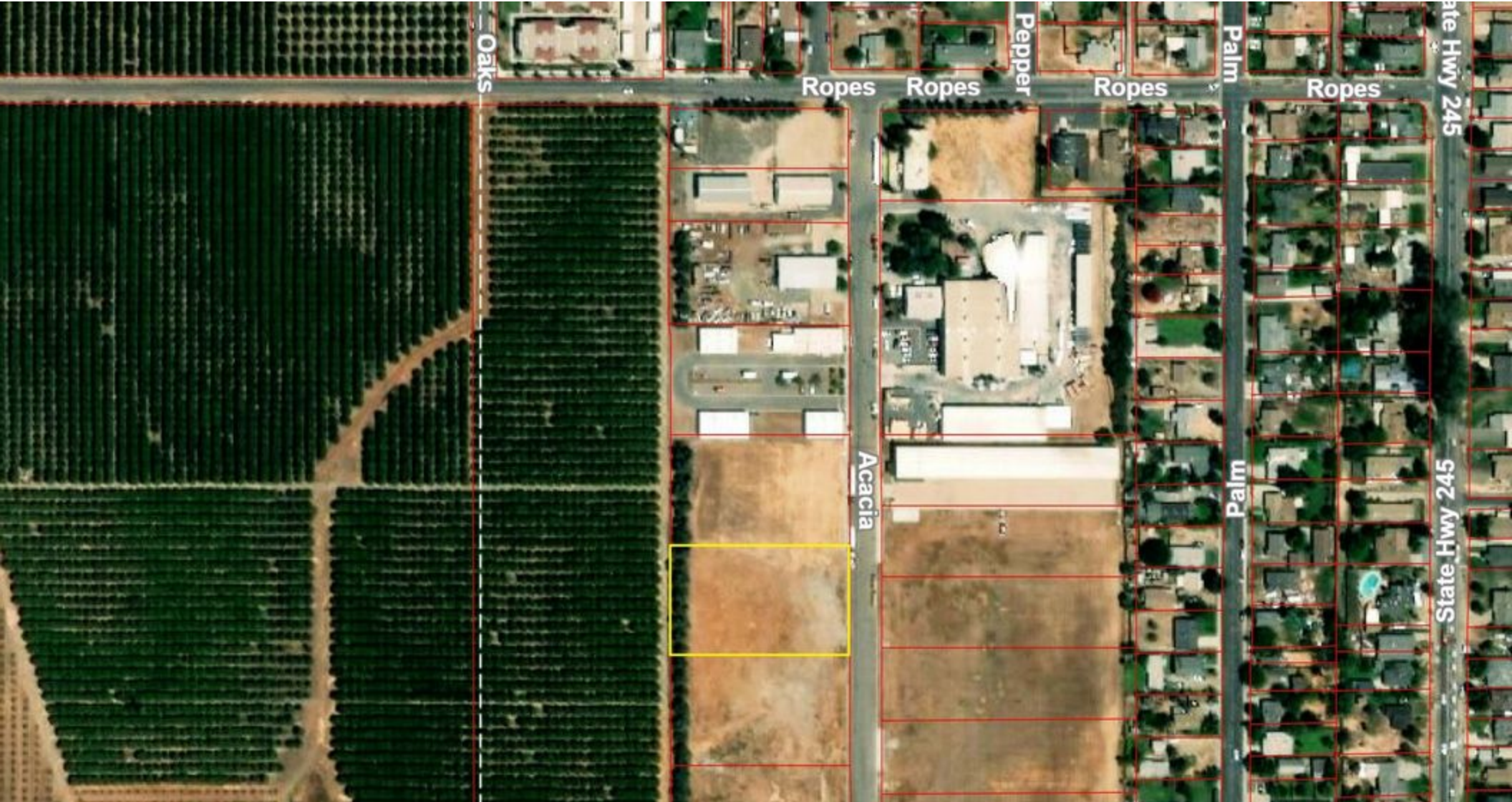
MARC GRIFFITHS
559.625.2128 x12
marc@zeebre.com
CalDRE #01434697

132 N Akers St
Visalia, CA 93291-5121
559.625.2128 | zeebre.com

ZEEB
Commercial Real Estate

ACACIA GREEN ZONE | 431 S. ACACIA ST., WOODLAKE, CA 93286

Additional Photos



MARTY ZEEB SIOR
+15596252128 x11
zeeb@aol.com
CalDRE #00847045

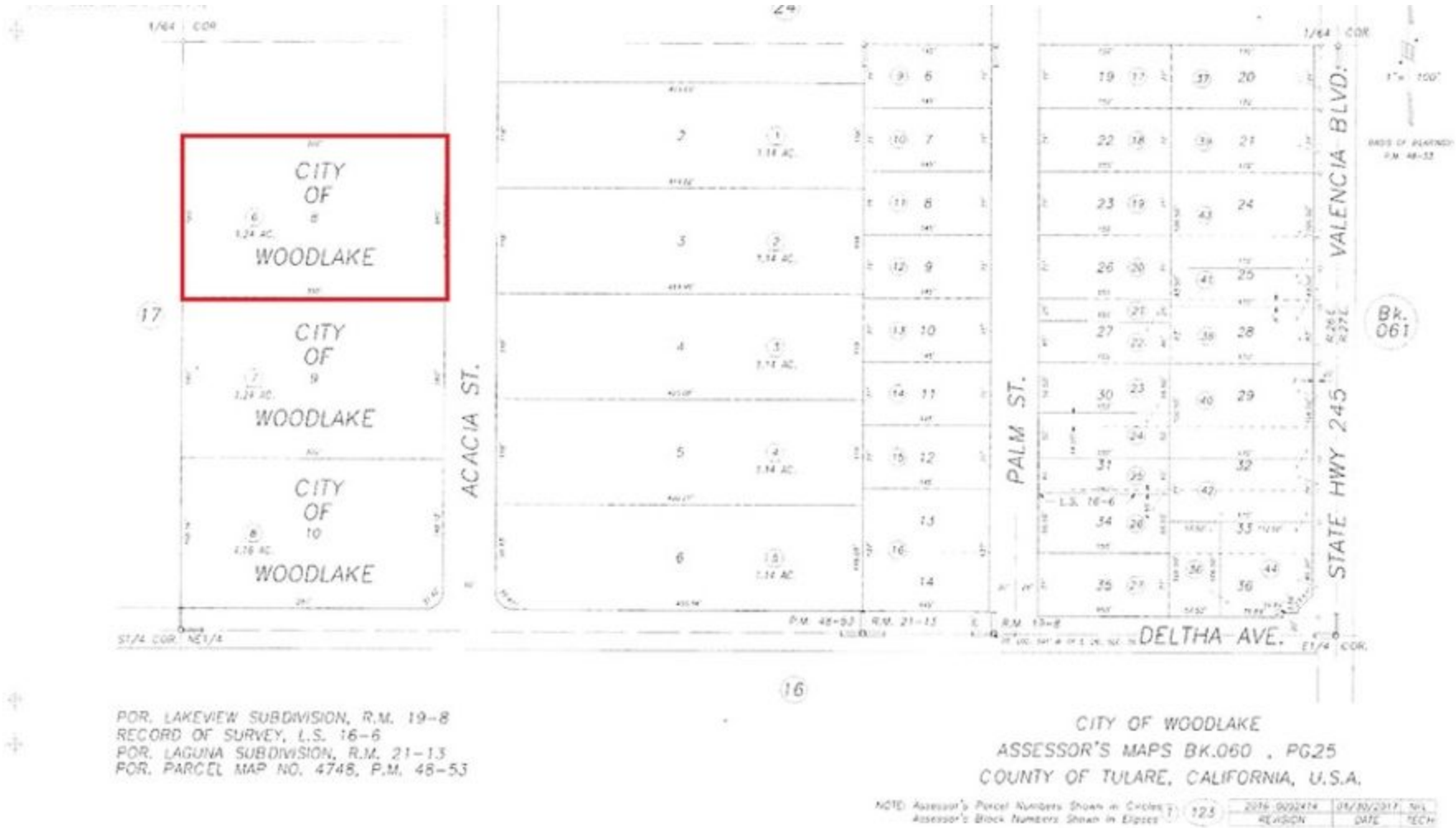
MARC GRIFFITHS
559.625.2128 x12
marc@zeebre.com
CalDRE #01434697

132 N Akers St
Visalia, CA 93291-5121
559.625.2128 | zeebre.com

ZEEB
Commercial Real Estate

ACACIA GREEN ZONE | 431 S. ACACIA ST., WOODLAKE, CA 93286

Additional Photos



MARTY ZEEB SIOR
 +15596252128 x11
 zeeb@aol.com
 CalDRE #00847045

MARC GRIFFITHS
 559.625.2128 x12
 marc@zeebre.com
 CalDRE #01434697

132 N Akers St
 Visalia, CA 93291-5121
 559.625.2128 | zeebre.com



ACACIA GREEN ZONE | 431 S. ACACIA ST., WOODLAKE, CA 93286

Location Maps



MARTY ZEEB SIOR
+15596252128 x11
zeeb@aol.com
CalDRE #00847045

MARC GRIFFITHS
559.625.2128 x12
marc@zeebre.com
CalDRE #01434697

132 N Akers St
Visalia, CA 93291-5121
559.625.2128 | zeebre.com

ZEEB
Commercial Real Estate

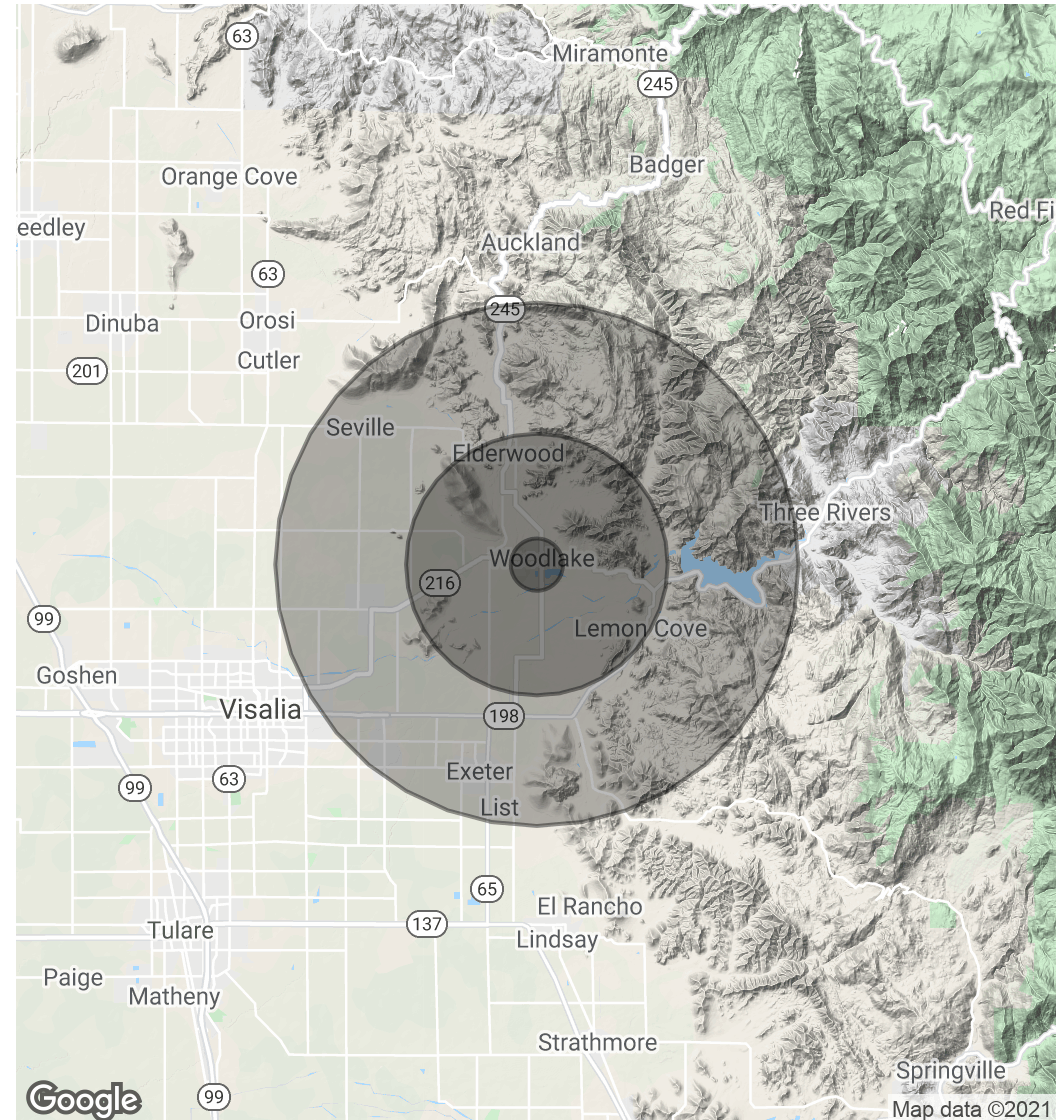
ACACIA GREEN ZONE | 431 S. ACACIA ST., WOODLAKE, CA 93286

Demographics Map & Report

POPULATION	1 MILE	5 MILES	10 MILES
Total Population	5,533	13,096	44,586
Average age	24.7	29.0	30.3
Average age (Male)	22.7	28.2	29.7
Average age (Female)	26.9	30.2	31.9

HOUSEHOLDS & INCOME	1 MILE	5 MILES	10 MILES
Total households	1,399	3,556	13,209
# of persons per HH	4.0	3.7	3.4
Average HH income	\$38,947	\$49,981	\$55,357
Average house value		\$324,860	\$308,290

* Demographic data derived from 2010 US Census



MARTY ZEEB SIOR
 +15596252128 x11
 zeeb@aol.com
 CalDRE #00847045

MARC GRIFFITHS
 559.625.2128 x12
 marc@zeebre.com
 CalDRE #01434697

132 N Akers St
 Visalia, CA 93291-5121
 559.625.2128 | zeebre.com

ZEEB
 Commercial Real Estate