

**For Lease • 2,400 SF Office or Retail w/ Storage  
1 Office • Bullpen/Showroom & Approx 500sf of Shop or Storage Space**

1339 N Plaza Dr.. Visalia, CA 93291



**FOR LEASE • 2,400 SF - OFFICE OR RETAIL W/STORAGE**

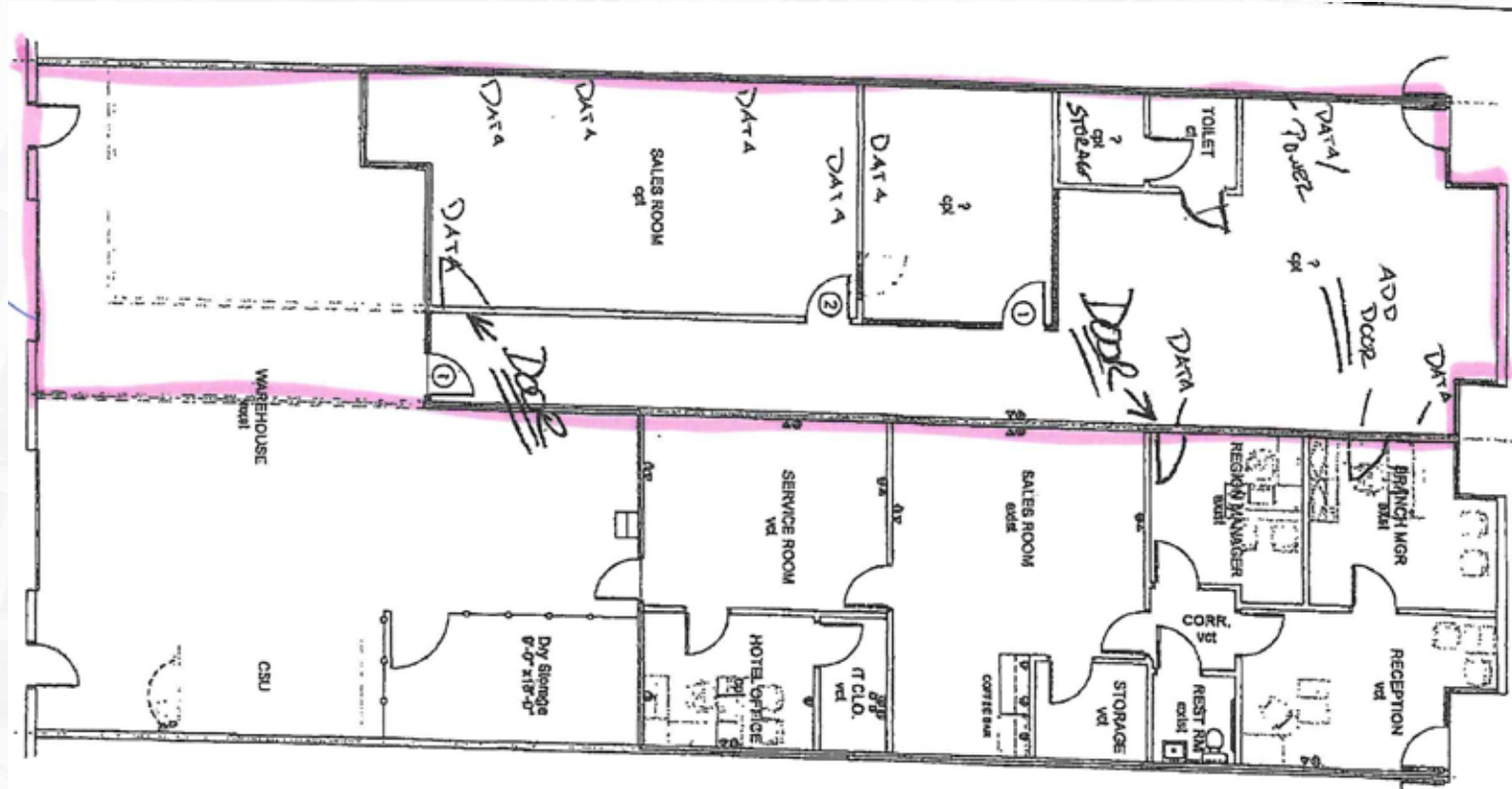
**MARTY ZEEB** | ZEEB COMMERCIAL BROKER  
DRE# 00847045 - 559.625.2128 x11 - [zeeb@aol.com](mailto:zeeb@aol.com)

**ZEEB**  
**Commercial Real Estate**

Visalia's Most Respected Commercial Real Estate Firm  
132 N. Akers St., Visalia, CA 93291 • (559) 625-2128

## FLOOR PLAN & OVERVIEW

Office/ Retail space with 1 office ,bullpen/showroom, and approx 500sf of shop or storage space. Located in Visalia's Industrial area. Available May 1, 2024. Call to schedule an appointment to see, please do not disturb Tenants



## INTERIOR PHOTOS



## DEMOGRAPHICS

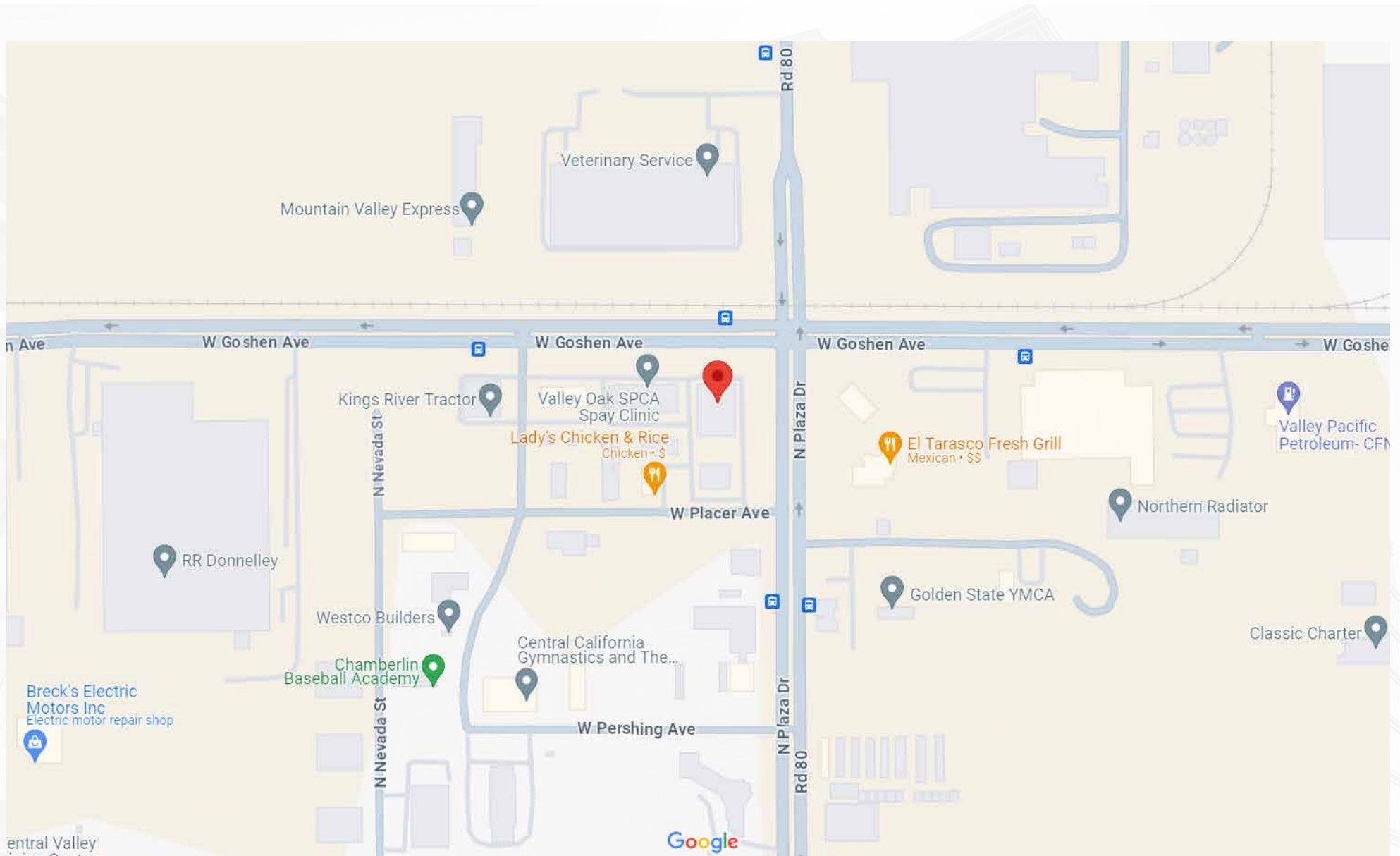
### POPULATION

	1 Mile	3 Mile	5 Mile
<b>2018 TOTAL POPULATION</b>	10,587	72,322	131,771
<b>Average Age</b>	26.1	30.9	31.8
<b>Average Age (Male)</b>	25.6	30.3	31.0
<b>Average Age (Female)</b>	27.2	32.6	33.5

### HOUSEHOLDS

	1 Mile	3 Mile	5 Mile
<b>Total Households</b>	2,906	22,900	43,502
<b># of Persons per HH</b>	3.6	3.2	3.0
<b>Average HH Income</b>	\$48,244	\$64,358	\$66,694
<b>Average House Value</b>	\$177,045	\$263,934	\$276,893

**FOR LEASE • 2,400 SF • Office or Retail w/Storage** 1339 N. Plaza Blvd. Visalia, CA 93291



**MARTY ZEEB** | ZEEB COMMERCIAL BROKER  
DRE# 00847045 - 559.625.2128 x11 - zeeb@aol.com

Note: This information is believed to be reliable, however broker makes no guarantee as to its current validity.

**ZEEB**  
Commercial Real Estate  
Visalia's Most Respected Commercial Real Estate Firm  
132 N. Akers St., Visalia, CA 93291 • (559) 625-2128