

LAND - AVAILABLE FOR LEASE



LOT 7 TULARE BUSINESS PARK TULARE, CA

PROPERTY INFORMATION

Availability:	6.17± Acres
Lease Rate:	\$3,100/month
Cross Street:	South O Street
Property Type:	Land
Zoning:	M2 (<i>Heavy Industrial</i>)
APN:	181-070-063 (<i>Tulare County</i>)

PROPERTY DESCRIPTION

This is a fenced 6.17± acres on Walnut Avenue north of the US Cold Storage, two blocks west of the Highway 99 and the Bardsley Avenue Interchange. Owner might sell.

**CALL KYLE
559-696-2842**

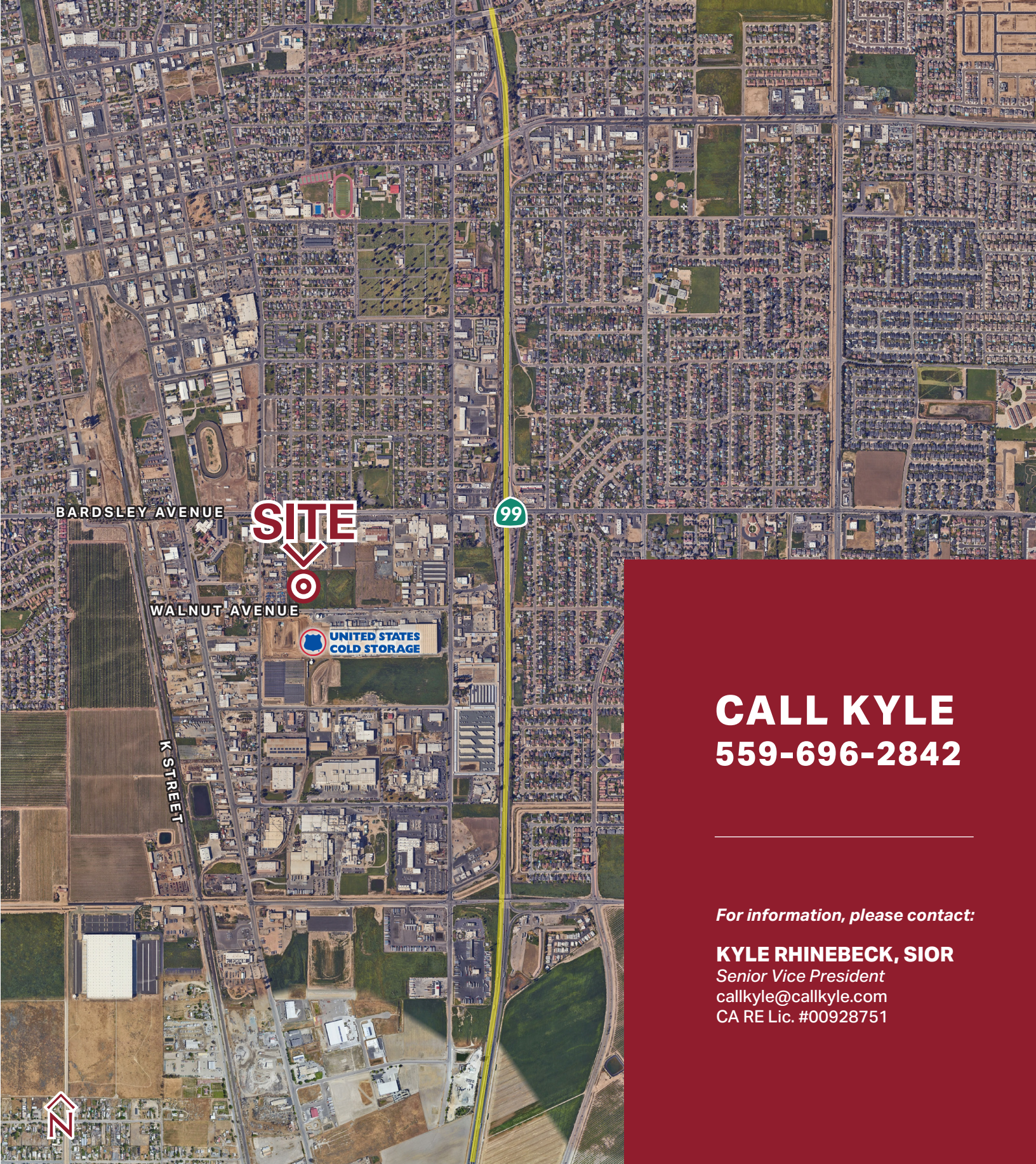
For information, please contact:

KYLE RHINEBECK, SIOR
Senior Vice President
callkyle@callkyle.com
CA RE Lic. #00928751

ZEEB
COMMERCIAL REAL ESTATE

Independently Owned and Operated | Corporate License #00020875 | zeebre.com
OFFICE: 3447 S. Demaree St., Visalia, CA 93277, t 559-625-2128

The distributor of this communication is performing acts for which a real estate license is required. The information contained herein has been obtained from sources deemed reliable but has not been verified and no guarantee, warranty or representation, either express or implied, is made with respect to such information. Terms of sale or lease and availability are subject to change or withdrawal without notice.



BARDSLEY AVENUE

SITE

99

WALNUT AVENUE



UNITED STATES
COLD STORAGE

K STREET

CALL KYLE
559-696-2842

For information, please contact:

KYLE RHINEBECK, SIOR
Senior Vice President
callkyle@callkyle.com
CA RE Lic. #00928751

ZEEB
COMMERCIAL REAL ESTATE

Independently Owned and Operated | Corporate License #00020875 | zeebre.com
OFFICE: 3447 S. Demaree St., Visalia, CA 93277, t 559-625-2128

The distributor of this communication is performing acts for which a real estate license is required. The information contained herein has been obtained from sources deemed reliable but has not been verified and no guarantee, warranty or representation, either express or implied, is made with respect to such information. Terms of sale or lease and availability are subject to change or withdrawal without notice.