

# NEWER INDUSTRIAL SPACE WITH OFFICE | 410 S. F STREET, EXETER, CA 93221

## Executive Summary



**LEASE RATE**      **\$4,000.00 PER MONTH**

### OFFERING SUMMARY

Available SF:	6,000 SF
Lease Rate:	\$4,000.00 per month (Gross)
Lot Size:	0.29 Acres
Year Built:	2019
Building Size:	6,000 SF
Zoning:	Service Commercial

### PROPERTY OVERVIEW

Very Clean, new industrial warehouse with nice office space. 5,400 SF of shop, 600 SF of office. Office includes reception/waiting area, 2 private offices, break area and private restroom. Existing 3 Phase 200 amp service. Call Marc for details or to schedule a showing.

### PROPERTY HIGHLIGHTS

- New Construction
- Includes 18' electric roll-up door

### DEMOGRAPHICS

	1 MILE	3 MILES	5 MILES
Total Households	1,433	5,225	8,606
Total Population	4,330	16,041	29,054
Average HH Income	\$53,215	\$54,341	\$51,942

**MARC GRIFFITHS**  
559.625.2128 x12  
marc@zeebre.com  
CalDRE #01434697

132 N Akers St  
Visalia, CA 93291-5121  
559.625.2128 | zeebre.com

***ZEEB***  
**Commercial Real Estate**

## NEWER INDUSTRIAL SPACE WITH OFFICE | 410 S. F STREET, EXETER, CA 93221

### Floor Plans



**MARC GRIFFITHS**  
559.625.2128 x12  
marc@zeebre.com  
CalDRE #01434697

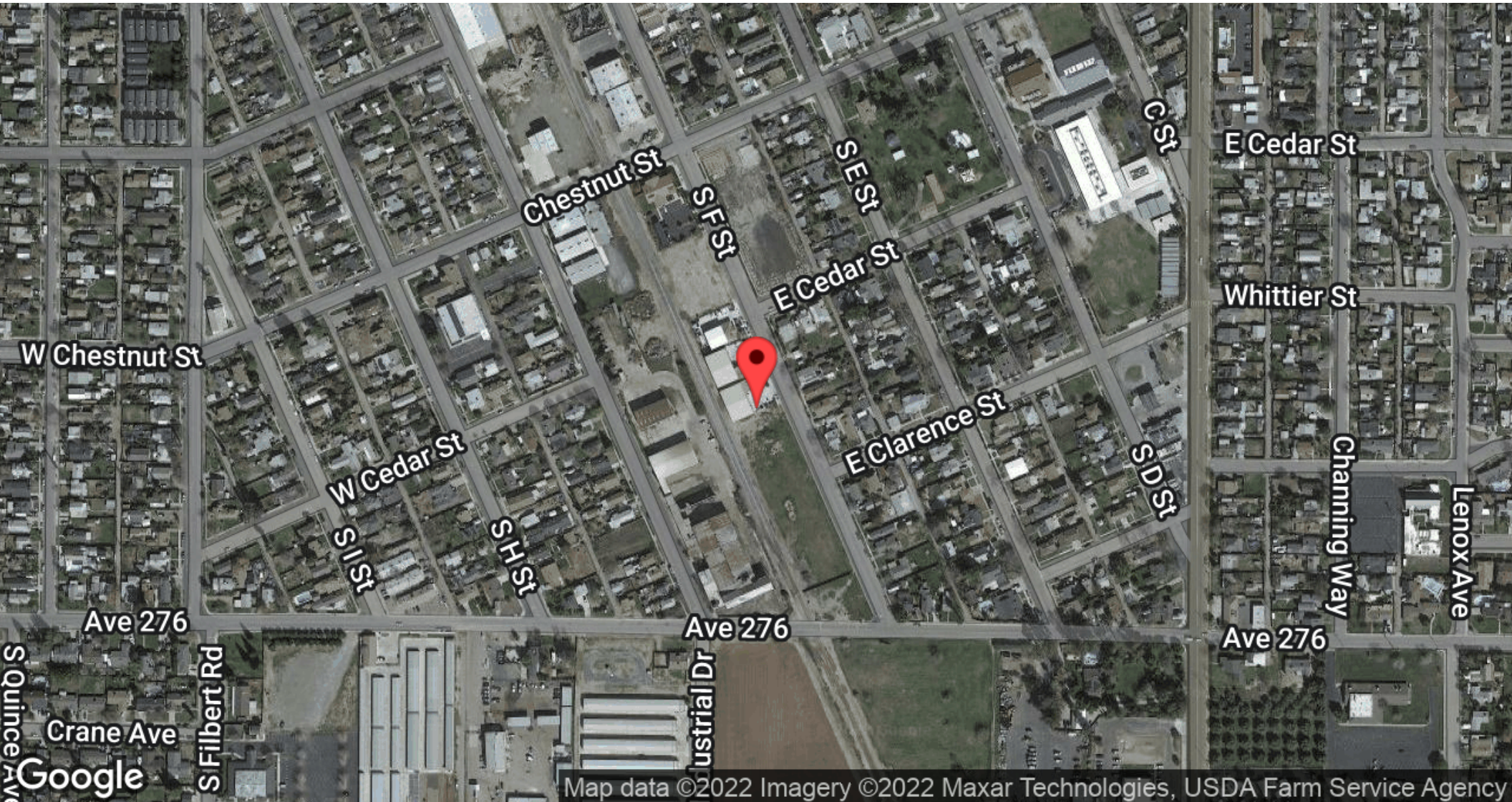
132 N Akers St  
Visalia, CA 93291-5121  
559.625.2128 | zeebre.com

***ZEEB***  
**Commercial Real Estate**



## NEWER INDUSTRIAL SPACE WITH OFFICE | 410 S. F STREET, EXETER, CA 93221

Location Map



Map data ©2022 Imagery ©2022 Maxar Technologies, USDA Farm Service Agency

**MARC GRIFFITHS**  
559.625.2128 x12  
marc@zeebre.com  
CalDRE #01434697

132 N Akers St  
Visalia, CA 93291-5121  
559.625.2128 | zeebre.com

***ZEEB***  
**Commercial Real Estate**



## NEWER INDUSTRIAL SPACE WITH OFFICE | 410 S. F STREET, EXETER, CA 93221

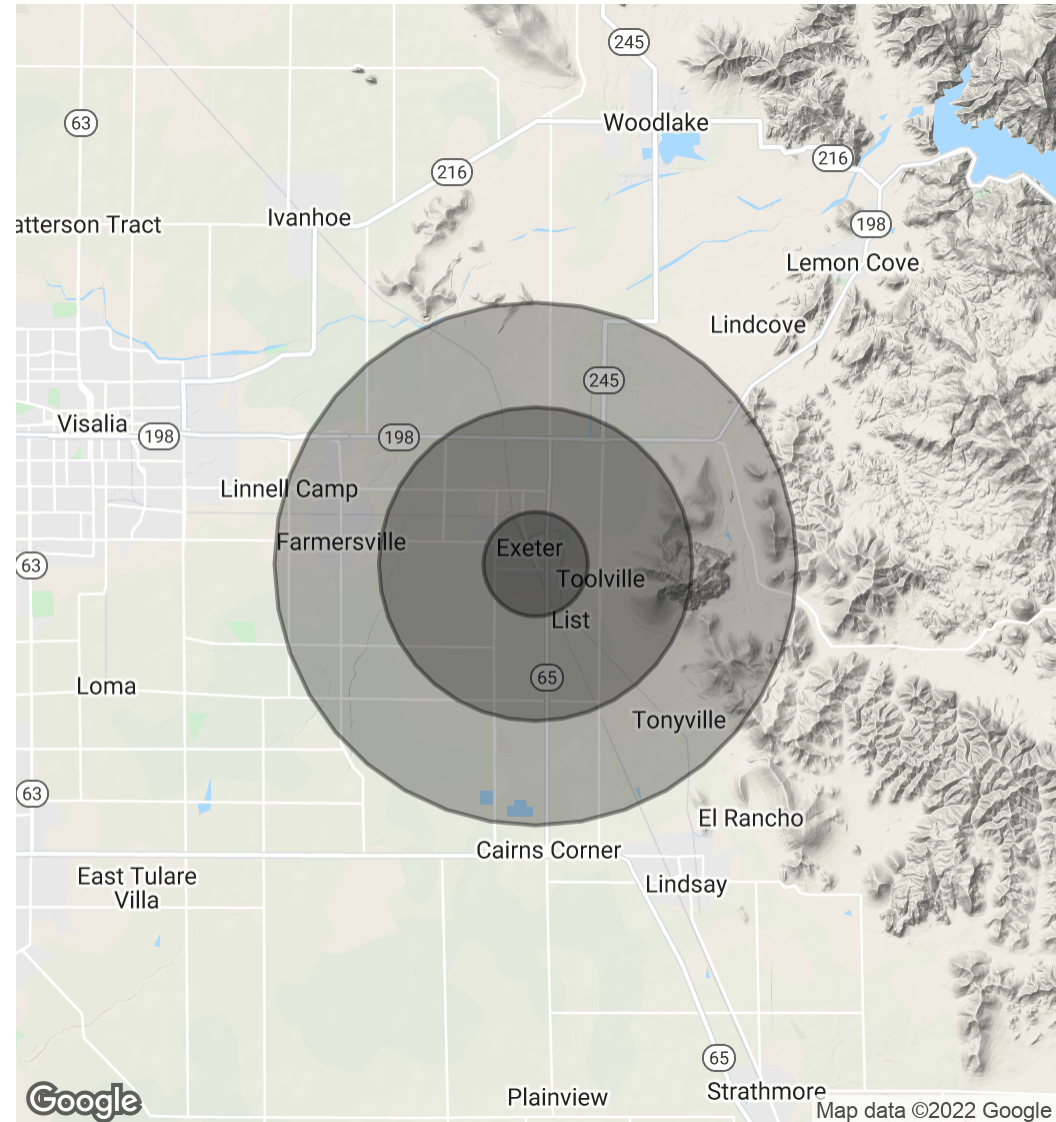
### Demographics Map & Report

POPULATION	1 MILE	3 MILES	5 MILES
Total Population	4,330	16,041	29,054
Average Age	29.9	30.7	30.0
Average Age (Male)	26.6	28.3	28.9
Average Age (Female)	34.1	34.2	31.7

HOUSEHOLDS & INCOME	1 MILE	3 MILES	5 MILES
Total Households	1,433	5,225	8,606
# of Persons per HH	3.0	3.1	3.4
Average HH Income	\$53,215	\$54,341	\$51,942
Average House Value		\$308,480	\$282,074

*\* Demographic data derived from 2010 US Census*



MARC GRIFFITHS  
559.625.2128 x12  
marc@zeebre.com  
CalDRE #01434697

132 N Akers St  
Visalia, CA 93291-5121  
559.625.2128 | zeebre.com

**ZEEB**  
Commercial Real Estate