

SOUTHSIDE PLAZA | 3312 S MOONEY BLVD., VISALIA, CA 93277

Executive Summary



LEASE RATE **\$1.20 SF/MONTH**

OFFERING SUMMARY

Available SF: 2,459 SF

Lease Rate: \$1.20 SF/month (NNN)

Building Size: 2,459 SF

PROPERTY OVERVIEW

Open space, former gym. Large showroom area with office, storage space and restroom. Plenty of on site parking. Available December 2021. Call to see.

PROPERTY HIGHLIGHTS

- Rare Mooney Blvd. location.
- Large parking lot.
- Easy access
- Good Visibility

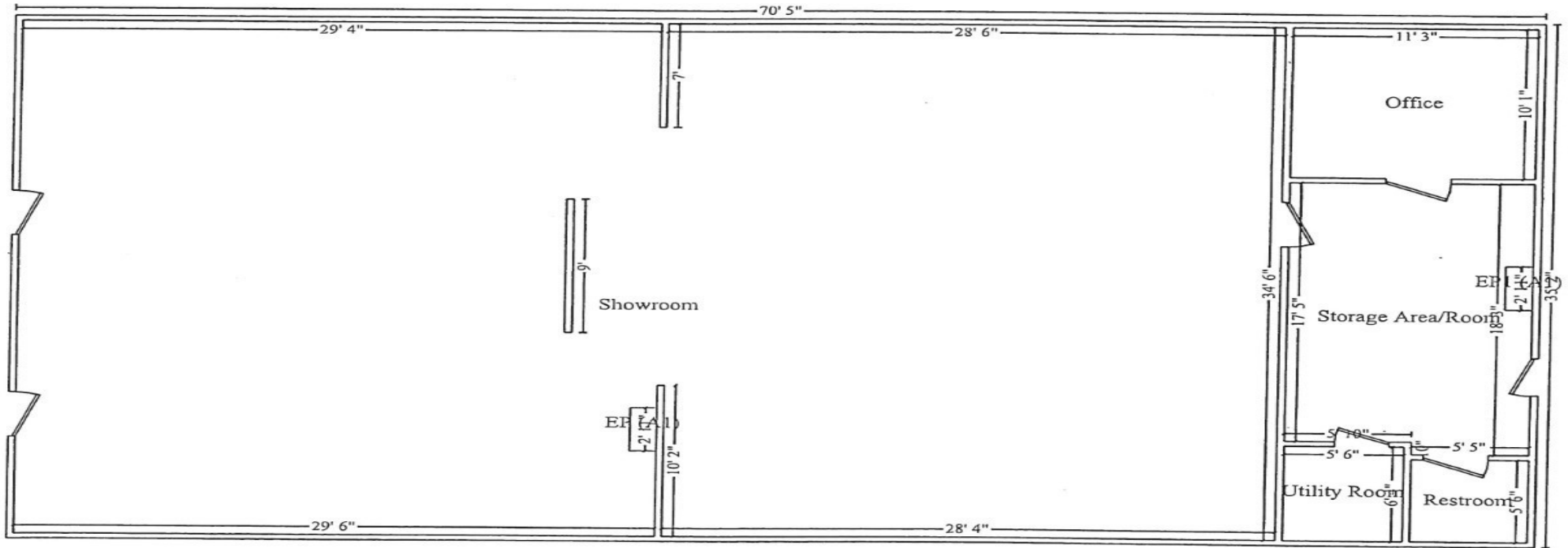
MARTY ZEEB SIOR
+15596252128 x11
zeeb@aol.com
CalDRE #00847045

132 N Akers St
Visalia, CA 93291-5121
559.625.2128 | zeebre.com

ZEEB
Commercial Real Estate

SOUTHSIDE PLAZA | 3312 S MOONEY BLVD., VISALIA, CA 93277

Floor Plans



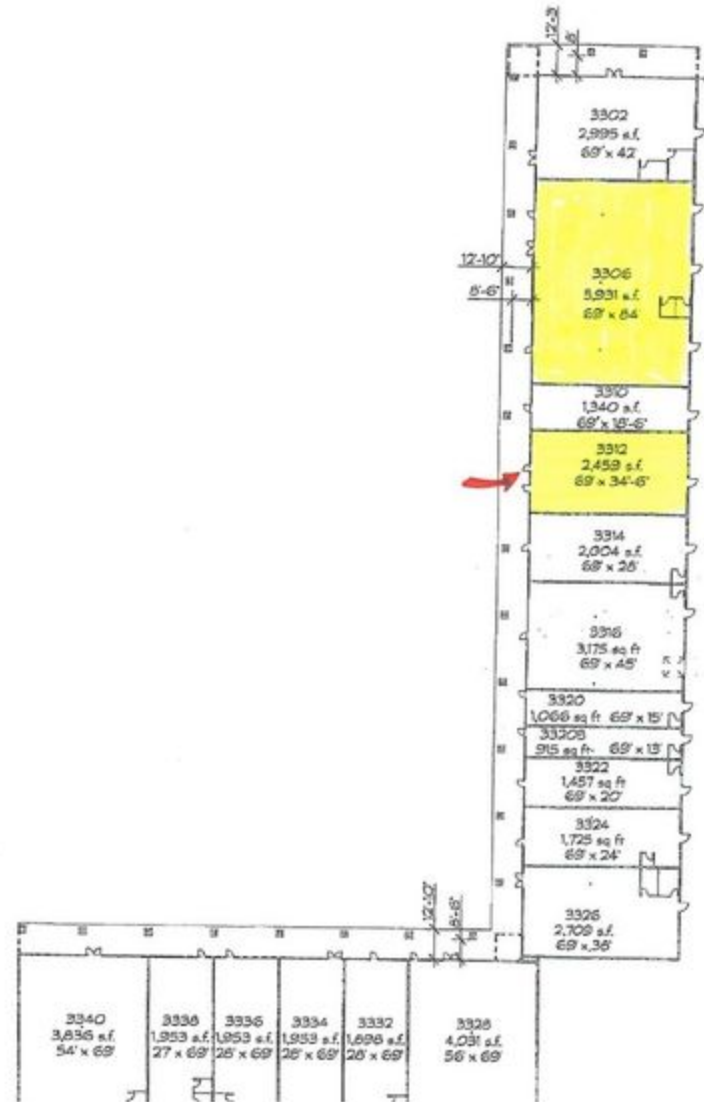
MARTY ZEEB SIOR
+15596252128 x11
zeeb@aol.com
CalDRE #00847045

132 N Akers St
Visalia, CA 93291-5121
559.625.2128 | zeebre.com

ZEEB
Commercial Real Estate

SOUTHSIDE PLAZA | 3312 S MOONEY BLVD., VISALIA, CA 93277

Additional Photos



MARTY ZEEB SIOR
+15596252128 x11
zeeb@aol.com
CalDRE #00847045

132 N Akers St
Visalia, CA 93291-5121
559.625.2128 | zeeb.com

ZEEB
Commercial Real Estate

SOUTHSIDE PLAZA | 3312 S MOONEY BLVD., VISALIA, CA 93277

Retailer Map



MARTY ZEEB SIOR
+15596252128 x11
zeeb@aol.com
CalDRE #00847045

132 N Akers St
Visalia, CA 93291-5121
559.625.2128 | zeebre.com

ZEEB
Commercial Real Estate

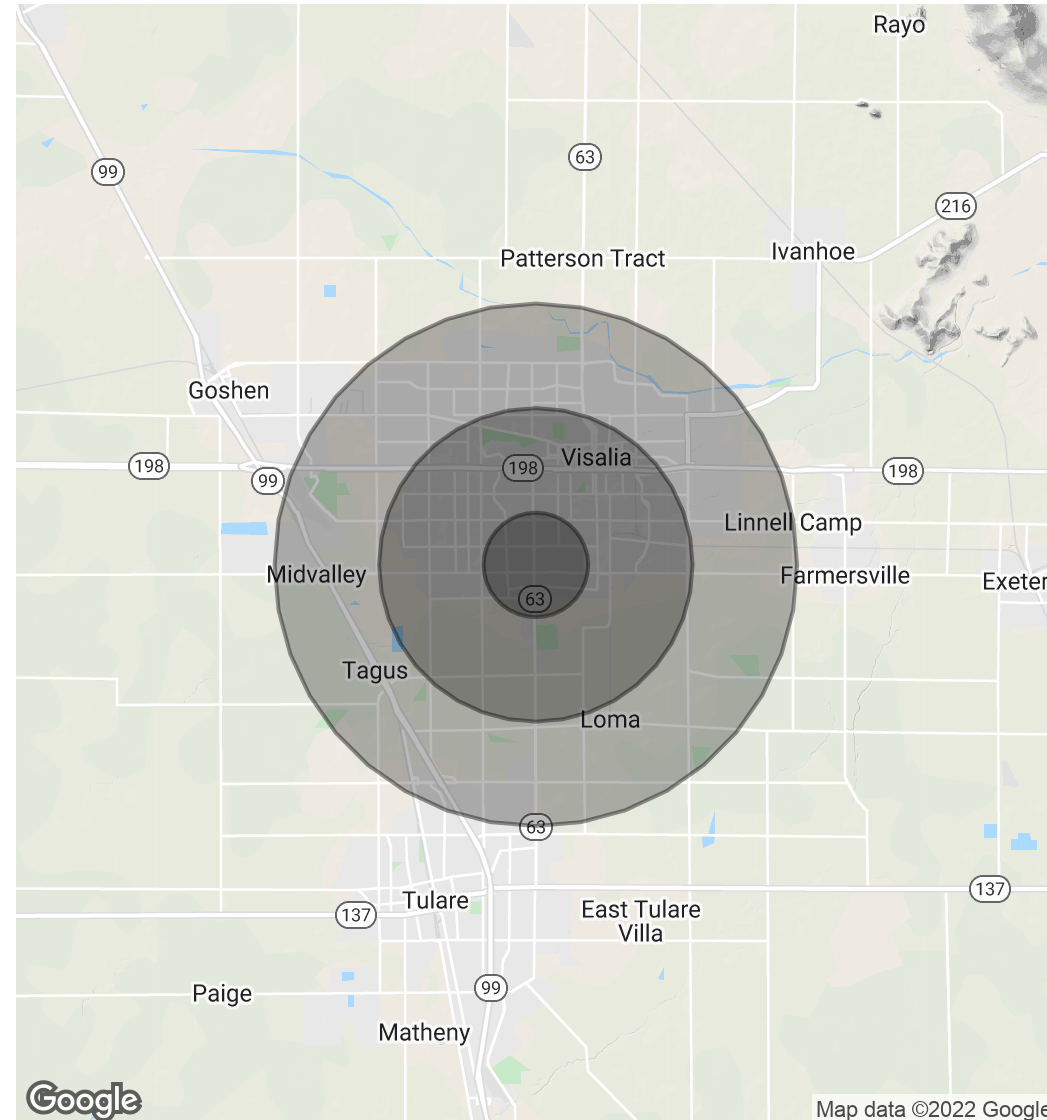
SOUTHSIDE PLAZA | 3312 S MOONEY BLVD., VISALIA, CA 93277

Demographics Map & Report

POPULATION	1 MILE	3 MILES	5 MILES
Total Population	10,436	74,071	127,709
Average Age	37.6	33.6	32.1
Average Age (Male)	37.5	32.8	31.3
Average Age (Female)	38.4	35.2	33.7

HOUSEHOLDS & INCOME	1 MILE	3 MILES	5 MILES
Total Households	3,859	26,114	42,465
# of Persons per HH	2.7	2.8	3.0
Average HH Income	\$74,202	\$63,552	\$67,716
Average House Value	\$297,217	\$280,931	\$277,177

* Demographic data derived from 2010 US Census



MARTY ZEEB SIOR
 +15596252128 x11
 zeeb@aol.com
 CalDRE #00847045

132 N Akers St
 Visalia, CA 93291-5121
 559.625.2128 | zeebre.com

ZEEB
 Commercial Real Estate