

INDUSTRIAL PARK OFFICE SPACE | 1728 N. KELSEY, VISALIA, CA 93291

Executive Summary



LEASE RATE **\$1,000.00 - 1,500.00 PER MONTH**

OFFERING SUMMARY

Available SF: 750 - 1,250 SF

Lease Rate: \$1,000.00 - 1,500.00 per month (MG)

Building Size: 2,000 SF

Zoning: Industrial

PROPERTY OVERVIEW

Two small stand alone office buildings available for lease within Visalia's Industrial Park.

PROPERTY HIGHLIGHTS

- N. Kelsey St. frontage

AVAILABLE SPACES

SPACE	LEASE RATE	SIZE (SF)
1720	\$1,000 per month	750 SF
1728	\$1,500 per month	1,250 SF

MARC GRIFFITHS
559.625.2128 x12
marc@zeebre.com
CalDRE #01434697

132 N Akers St
Visalia, CA 93291-5121
559.625.2128 | zeebre.com

ZEEB
Commercial Real Estate

INDUSTRIAL PARK OFFICE SPACE | 1728 N. KELSEY, VISALIA, CA 93291

Additional Photos



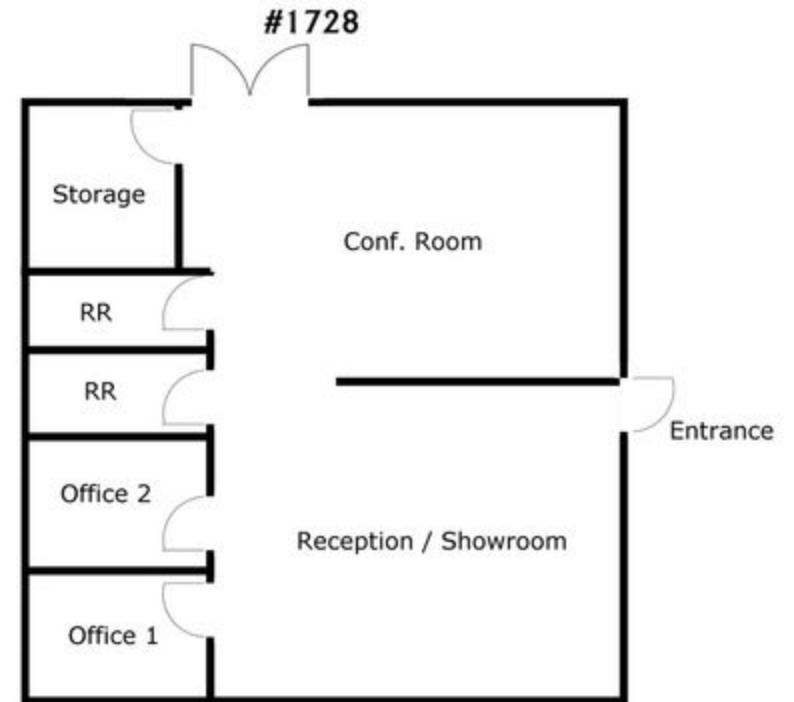
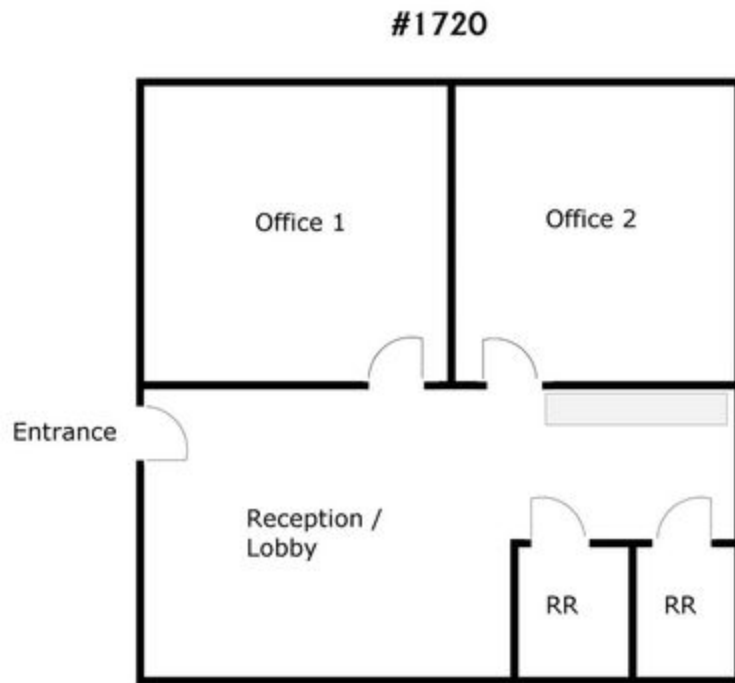
MARC GRIFFITHS
559.625.2128 x12
marc@zeebre.com
CalDRE #01434697

132 N Akers St
Visalia, CA 93291-5121
559.625.2128 | zeebre.com

ZEEB
Commercial Real Estate

INDUSTRIAL PARK OFFICE SPACE | 1728 N. KELSEY, VISALIA, CA 93291

Floor Plans



MARC GRIFFITHS
559.625.2128 x12
marc@zeebre.com
CalDRE #01434697

132 N Akers St
Visalia, CA 93291-5121
559.625.2128 | zeebre.com

ZEEB
Commercial Real Estate

INDUSTRIAL PARK OFFICE SPACE | 1728 N. KELSEY, VISALIA, CA 93291

Location Map



Map data ©2022 Imagery ©2022 Maxar Technologies, USDA Farm Service Agency

MARC GRIFFITHS
559.625.2128 x12
marc@zeebre.com
CalDRE #01434697

132 N Akers St
Visalia, CA 93291-5121
559.625.2128 | zeebre.com

ZEEB
Commercial Real Estate

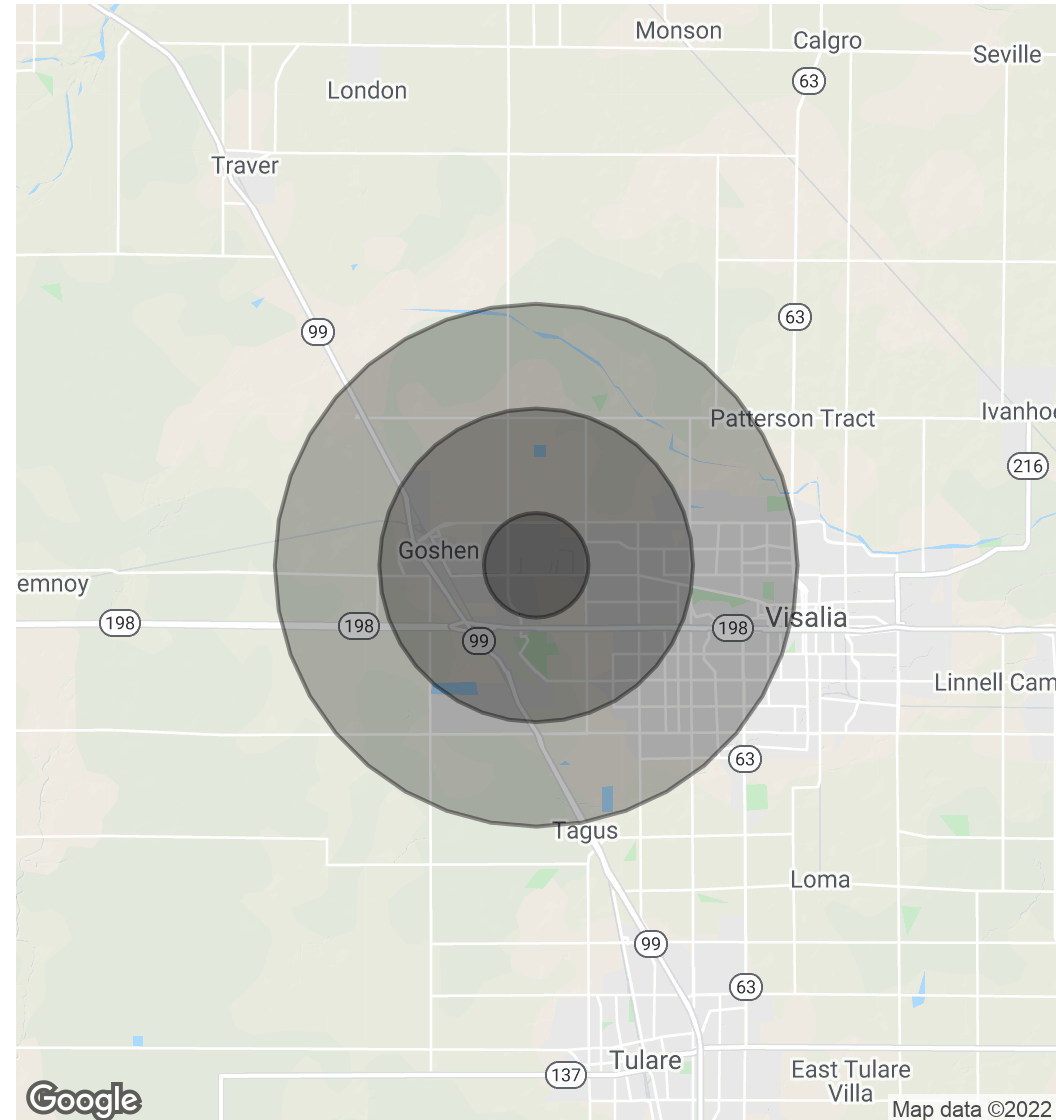
INDUSTRIAL PARK OFFICE SPACE | 1728 N. KELSEY, VISALIA, CA 93291

Demographics Map & Report

POPULATION	1 MILE	3 MILES	5 MILES
Total Population	3,820	24,264	64,045
Average Age	28.8	31.4	32.6
Average Age (Male)	29.2	31.2	32.0
Average Age (Female)	28.3	31.6	33.4

HOUSEHOLDS & INCOME	1 MILE	3 MILES	5 MILES
Total Households	1,109	7,646	21,353
# of Persons per HH	3.4	3.2	3.0
Average HH Income	\$95,132	\$91,477	\$77,544
Average House Value	\$306,333	\$305,913	\$302,644

* Demographic data derived from 2010 US Census



MARC GRIFFITHS
 559.625.2128 x12
 marc@zeebre.com
 CalDRE #01434697

132 N Akers St
 Visalia, CA 93291-5121
 559.625.2128 | zeebre.com

ZEEB
 Commercial Real Estate