

Sub-Lease - 2,663 SF - 6 Offices

Shared Reception, Restrooms , Breakroom. Downtown Visalia.

125 S. Bridge St., VISALIA, CA 93291



Sub-Lease • 2,663 SF - UP TO 6 OFFICES - DOWNTOWN VISALIA

MARTY ZEEB | ZEEB COMMERCIAL BROKER
DRE# 00847045 - 559.625.2128 x11 - zeeb@aol.com

ZEEB

Commercial Real Estate

Visalia's Most Respected Commercial Real Estate Firm
132 N. Akers St., Visalia, CA 93291 • (559) 625-2128

LISTING HIGHLIGHTS

Nice downtown Visalia office space with shared reception up to 6 offices, with bullpen area. Common restrooms, break area. New carpet and paint! Conference room available upon appointment. Call to schedule a showing.

LEASE RATE: \$3,995 /MONTH

TYPE: OFFICE

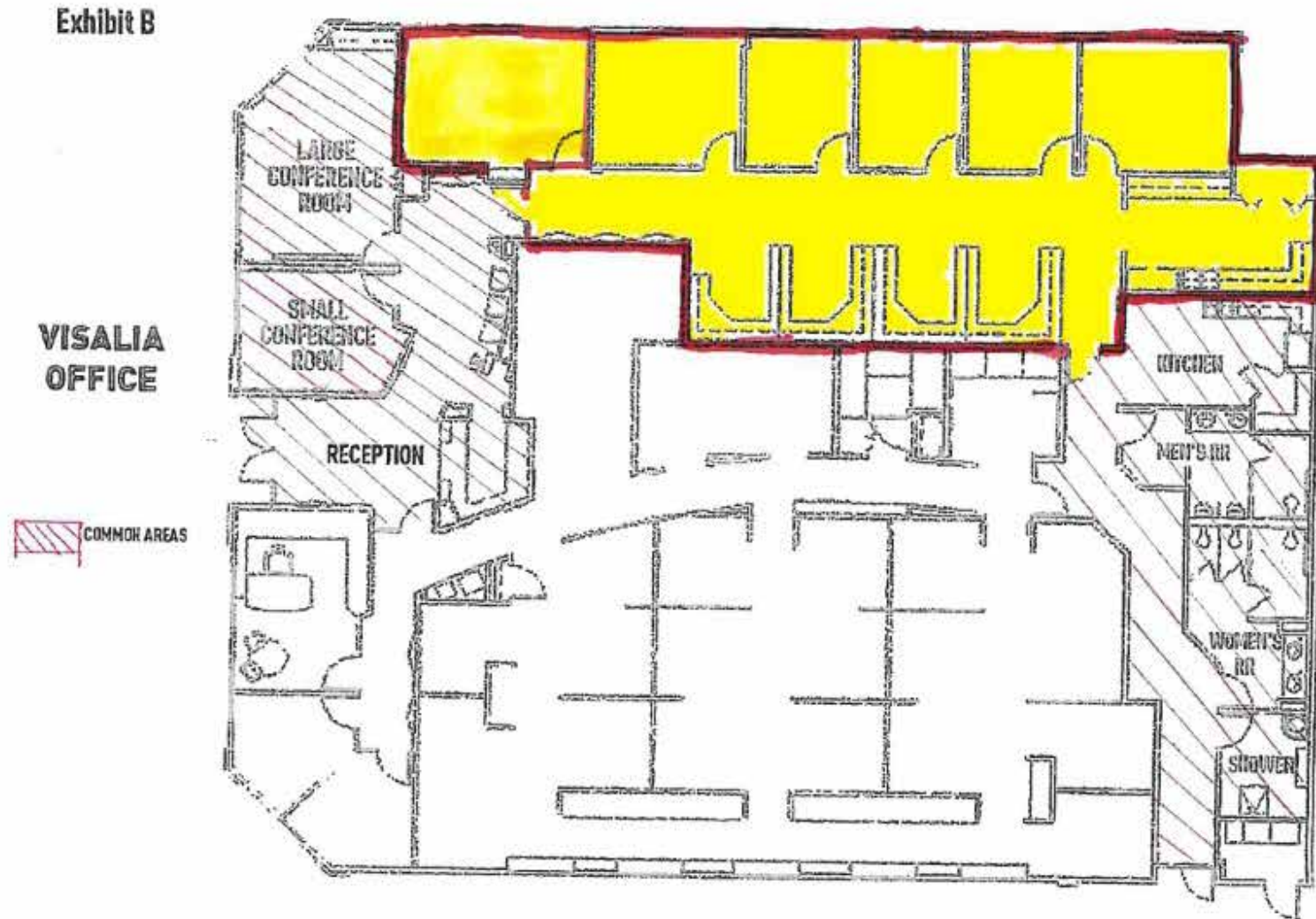
SF: 2,663 SF



INTERIOR PHOTOS



SITE PLAN



DEMOGRAPHICS

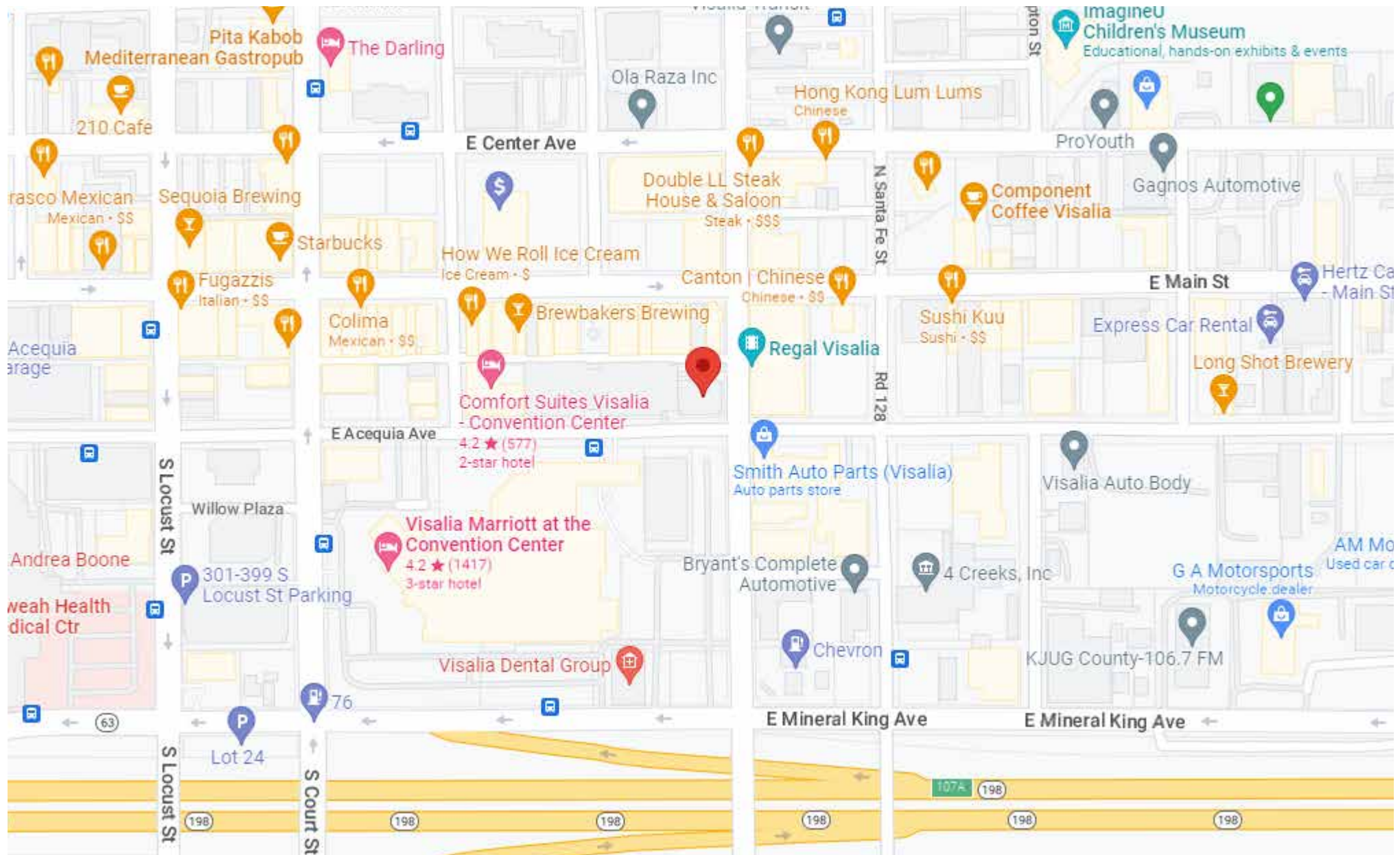
POPULATION

	1 Mile	3 Mile	5 Mile
2018 TOTAL POPULATION	10,587	72,322	131,771
Average Age	26.1	30.9	31.8
Average Age (Male)	25.6	30.3	31.0
Average Age (Female)	27.2	32.6	33.5

HOUSEHOLDS

	1 Mile	3 Mile	5 Mile
Total Households	2,906	22,900	43,502
# of Persons per HH	3.6	3.2	3.0
Average HH Income	\$48,244	\$64,358	\$66,694
Average House Value	\$177,045	\$263,934	\$276,893

SUB-LEASE • 2,663 SF - Up To 6 Offices 125 S. Bridge St., VISALIA, CA 93291



MARTY ZEEB | ZEEB COMMERCIAL BROKER
DRE# 00847045 - 559.625.2128 x11 - zeeb@aol.com

Note: This information is believed to be reliable, however broker makes no guarantee as to its current validity.

ZEEB
Commercial Real Estate
Visalia's Most Respected Commercial Real Estate Firm
132 N. Akers St., Visalia, CA 93291 • (559) 625-2128