

AVAILABLE FOR SALE  
7.38± ACRES OF COMMERCIAL LAND

NEC FARMERSVILLE BOULEVARD & WALNUT AVENUE  
FARMERSVILLE, CALIFORNIA

WALNUT AVENUE

FARMERSVILLE BOULEVARD



For information, please contact:

**MARC GRIFFITHS**  
SENIOR VICE PRESIDENT  
t 559-625-2128  
marc@zeebre.com  
CA RE Lic. #01434697



**ZEEB**  
COMMERCIAL REAL ESTATE

*Independently Owned and Operated* | Corporate License #00020875 | [zeebre.com](http://zeebre.com)

**OFFICE:** 3447 S. Demaree St., Visalia, CA 93277, t 559-625-2128

The distributor of this communication is performing acts for which a real estate license is required. The information contained herein has been obtained from sources deemed reliable but has not been verified and no guarantee, warranty or representation, either express or implied, is made with respect to such information. Terms of sale or lease and availability are subject to change or withdrawal without notice.



**7.38± ACRES FARMERSVILLE BLVD. & WALNUT AVE.**  
 FARMERSVILLE, CA

**AVAILABLE FOR SALE**  
 PROPERTY INFORMATION

<b>Lot Size:</b>	7.38± acres
<b>Availability:</b>	4 parcels
<b>Zoning:</b>	CG (General Commercial) RM-4 (Multi-Family)
<b>PRICE:</b>	\$1,250,000
<i>Parcel 1 (0.98± AC)</i>	Fueling Station / C Store (CG)
<i>Parcel 2 (0.63± AC)</i>	QSR (CG)
<i>Parcel 3 (3.16± AC)</i>	General Commercial (CG)
<i>Parcel 4 (2.59± AC)</i>	Residential (RM-4)

**PROPERTY DESCRIPTION**

Mixed use development opportunity for sale in Farmersville, California. prime location in the heart of Farmersville. Visibility and access from both Farmersville Boulevard and Walnut Avenue. Three parcels are zoned CG (General Commercial) and one parcel is zoned RM-4 (Multi-Family).

**LOCATION DESCRIPTION**

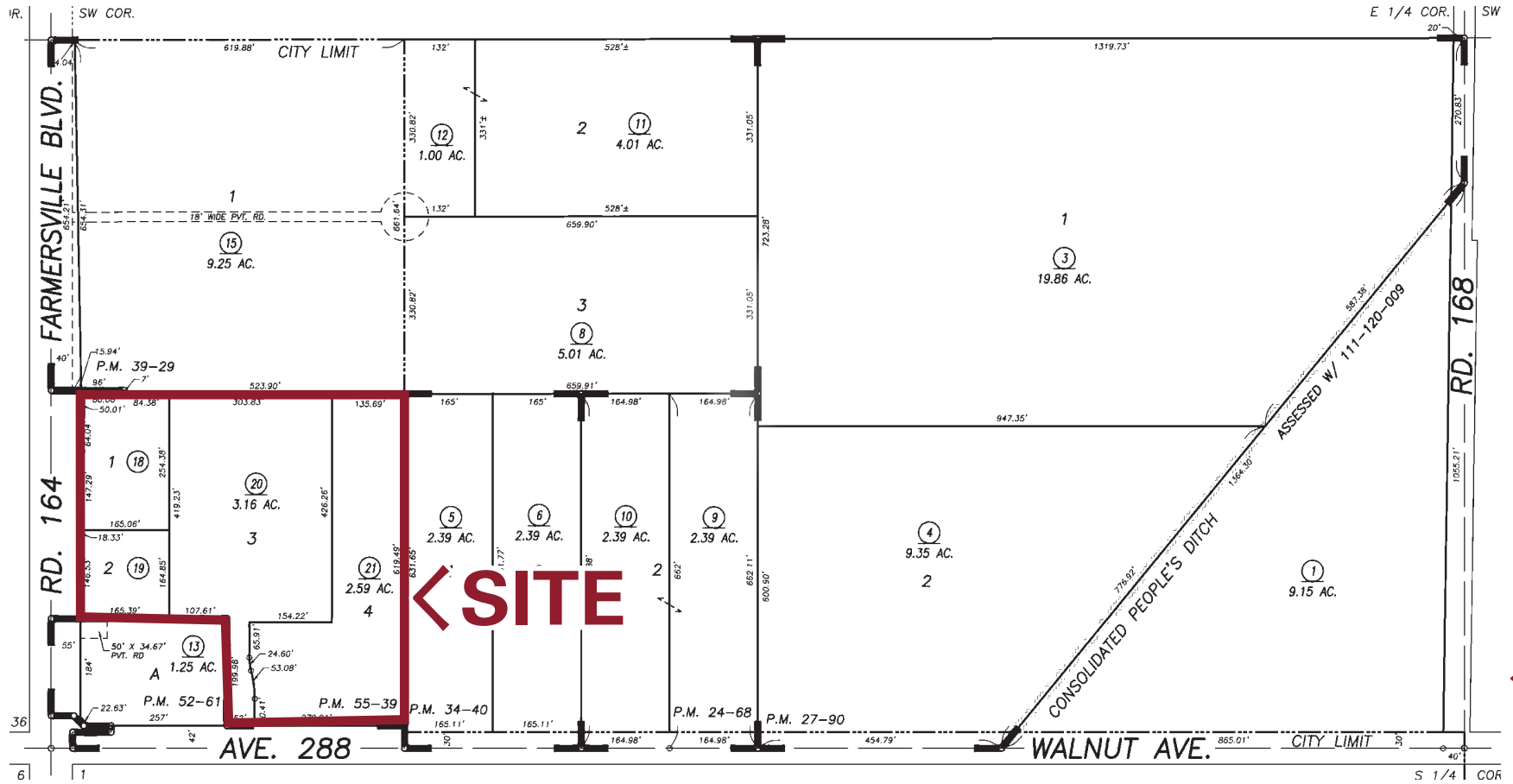
In the heart of Farmersville on the corner of Farmersville Boulevard and Walnut Avenue. *Call Marc for details.*



**\$1,250,000**  
 ASKING PRICE

**7.38± ACRES FARMERSVILLE BLVD. & WALNUT AVE.**  
FARMERSVILLE, CA

**PROPERTY**  
APN MAP







For information, please contact:

**MARC GRIFFITHS**  
SENIOR VICE PRESIDENT  
559-625-2128  
MARC@ZEEBRE.COM  
CA RE Lic. #01434697



*Independently Owned and Operated* | Corporate License #00020875 | [zeebre.com](http://zeebre.com)  
**OFFICE:** 3447 S. Demaree St., Visalia, CA 93277, t 559-625-2128  
The distributor of this communication is performing acts for which a real estate license is required. The information contained herein has been obtained from sources deemed reliable but has not been verified and no guarantee, warranty or representation, either express or implied, is made with respect to such information. Terms of sale or lease and availability are subject to change or withdrawal without notice.