

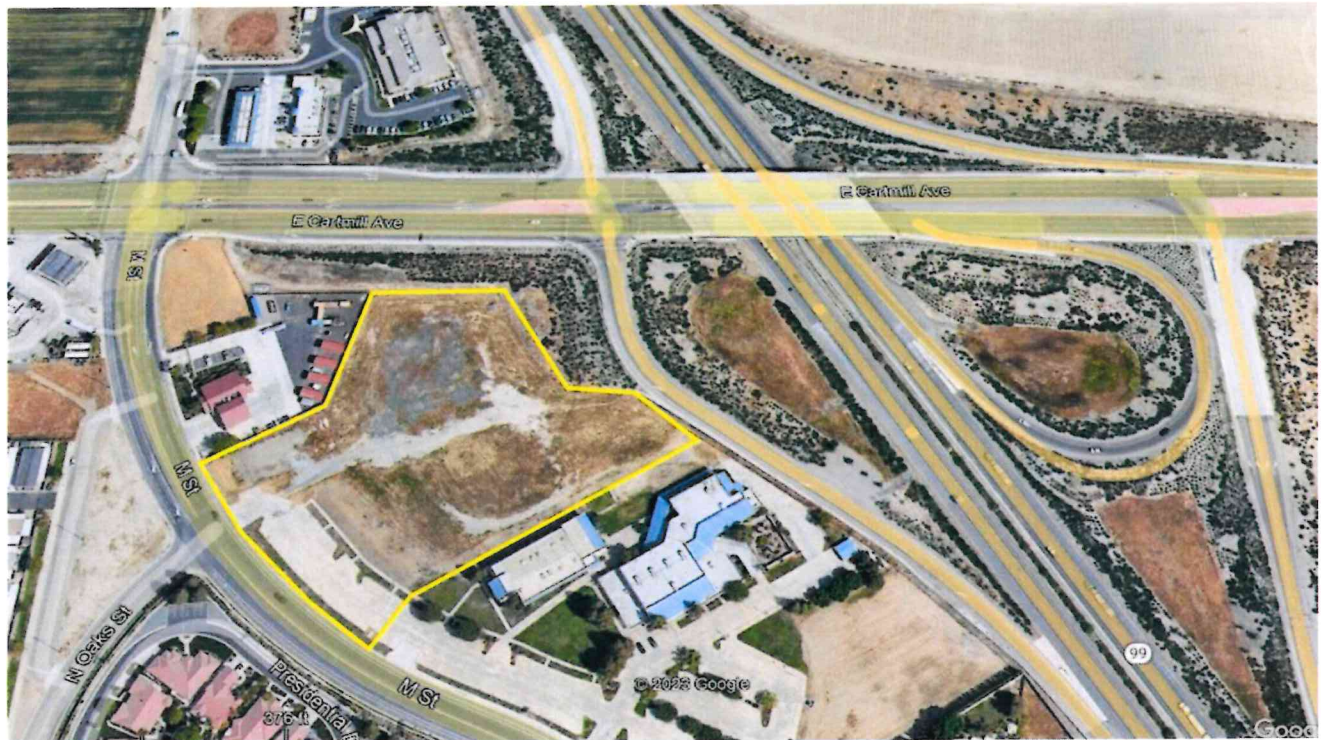
Land

For Sale

Future Hotel Site 4.74 Acres for SALE

Tulare CA

Cartmill & 99



Property Highlights

- 4.74 Acres of Land
- Zoning C-3
- Planned 136 Room Hotel

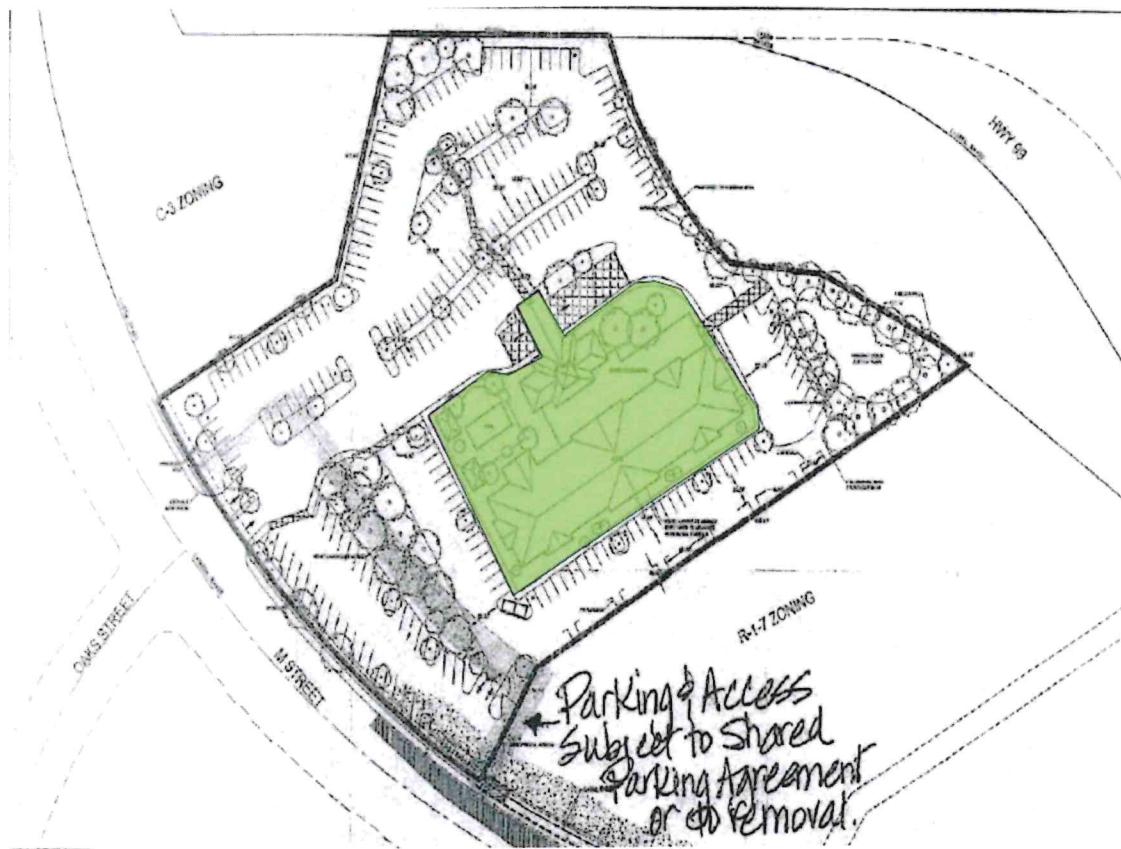
In Planning

- 800 ft of Freeway 99/ Cartmill Frontage
- 50,000 cars sb per day
- \$5,500,000 / \$26.64 PSF

Cartmill & 99
Tulare CA

For Sale

Conceptual Site Plan



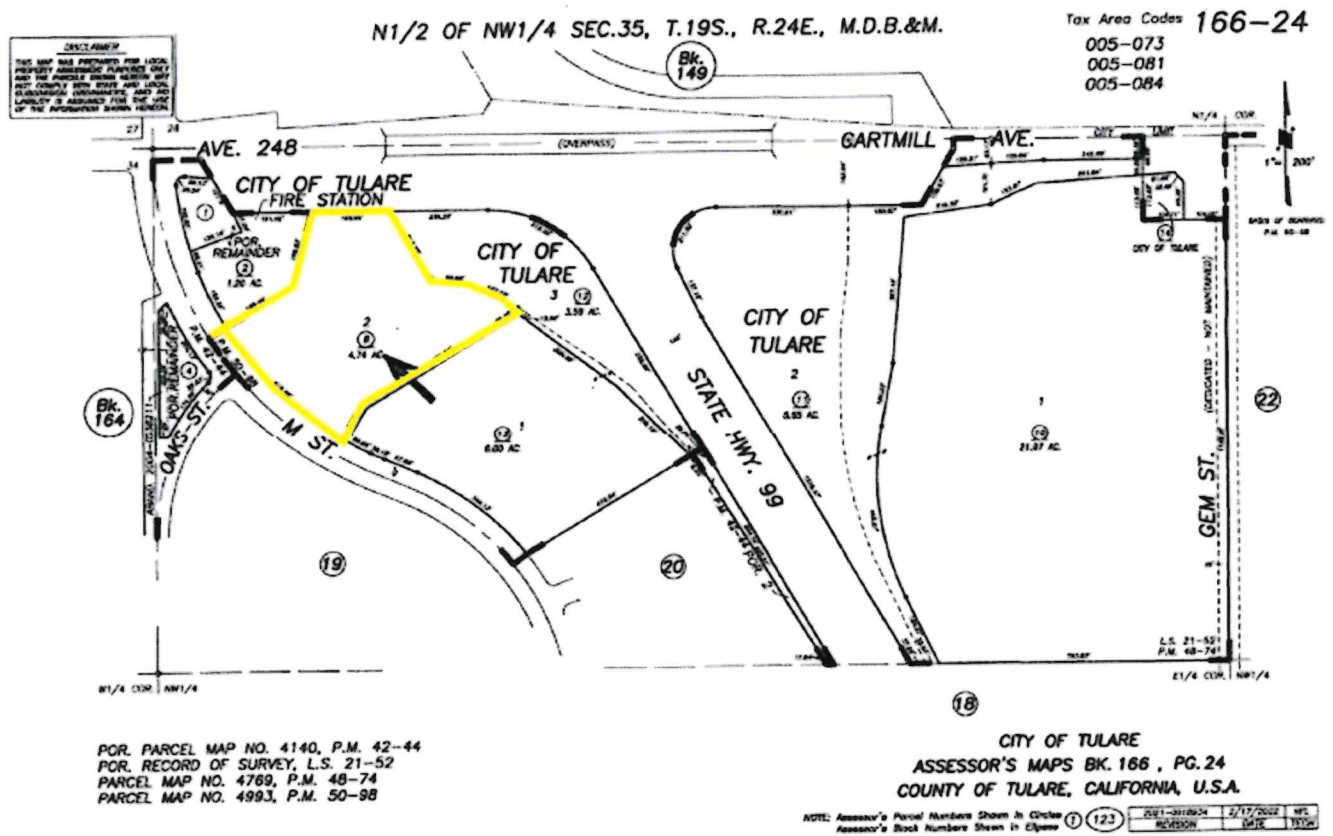
ZEEB

Commercial Real Estate

Cartmil & 99
Tulare CA

For Sale

Parcel Map



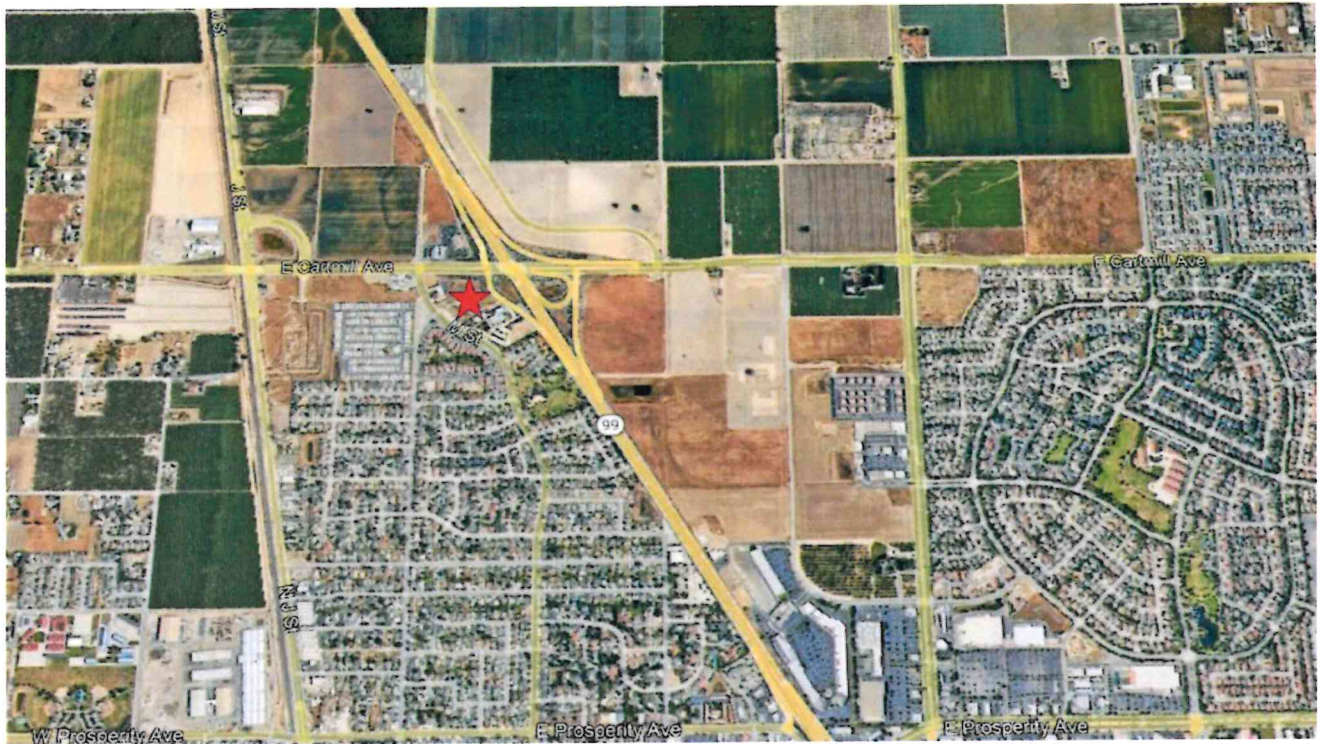
ZEEB

Commercial Real Estate

Cartmil & 99
Tulare CA

For Sale

Aerial Map



Contact :

Kyle Rhinebeck SIOR

DRE# 00928751

Zeeb Commercial Real Estate

Callkyle@callkyle.com

Call Kyle 559-696-2842