

For Lease • 2,400 SF Office or Retail w/ Storage 1 Office • Bullpen/Showroom & Approx 500sf of Shop or Storage Space

1339 N Plaza Dr.. Visalia, CA 93291



FOR LEASE • 2,400 SF - OFFICE OR RETAIL W/STORAGE

MARTY ZEEB | ZEEB COMMERCIAL BROKER
DRE# 00847045 - 559.625.2128 x11 - zeeb@aol.com

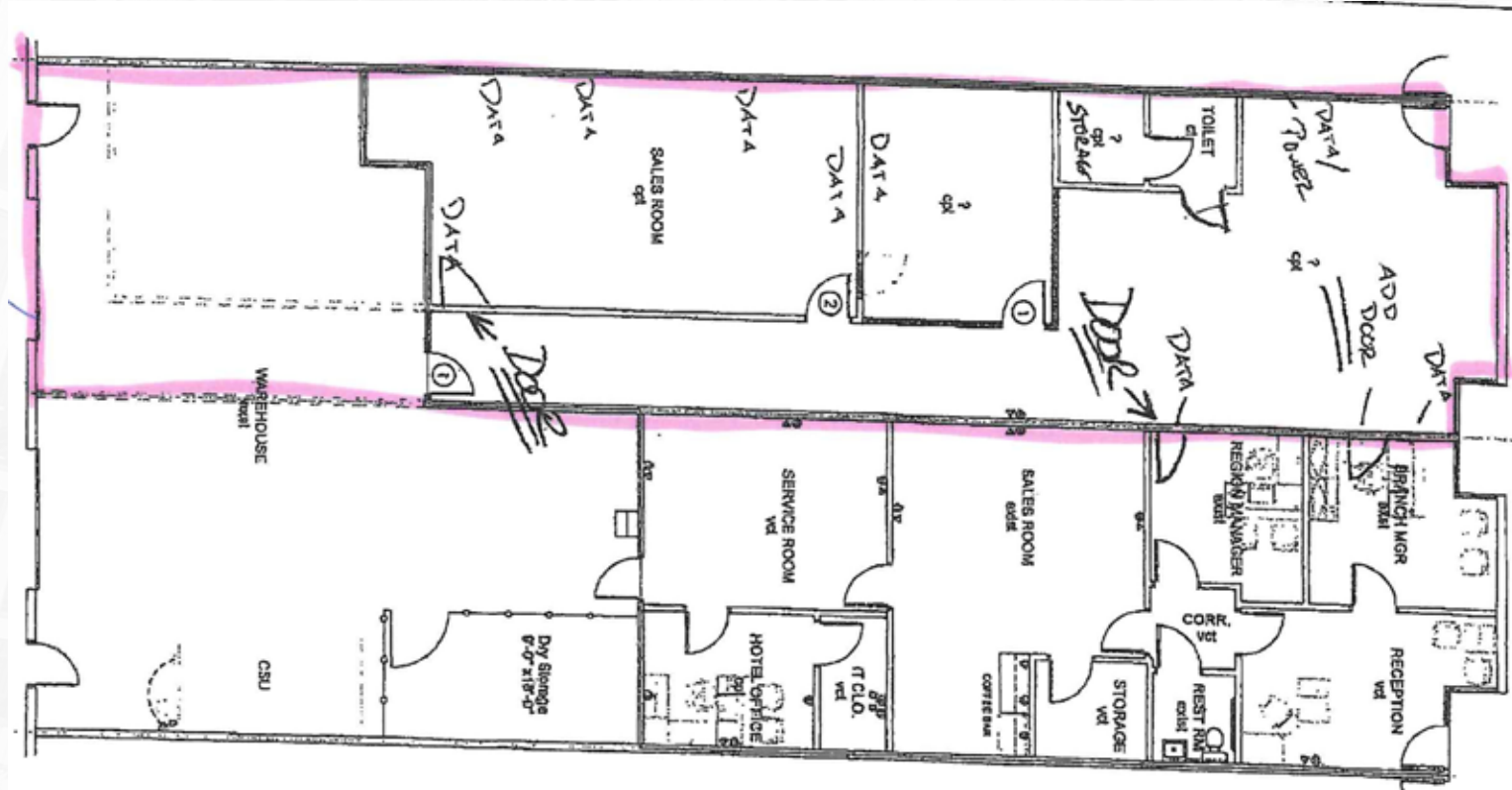
ZEEB

Commercial Real Estate

Visalia's Most Respected Commercial Real Estate Firm
132 N. Akers St., Visalia, CA 93291 • (559) 625-2128

FLOOR PLAN & OVERVIEW

Office/ Retail space with 1 office ,bullpen/showroom, and approx 500sf of shop or storage space. Located in Visalia's Industrial area. Available May 1, 2024. Call to schedule an appointment to see, please do not disturb Tenants



DEMOGRAPHICS

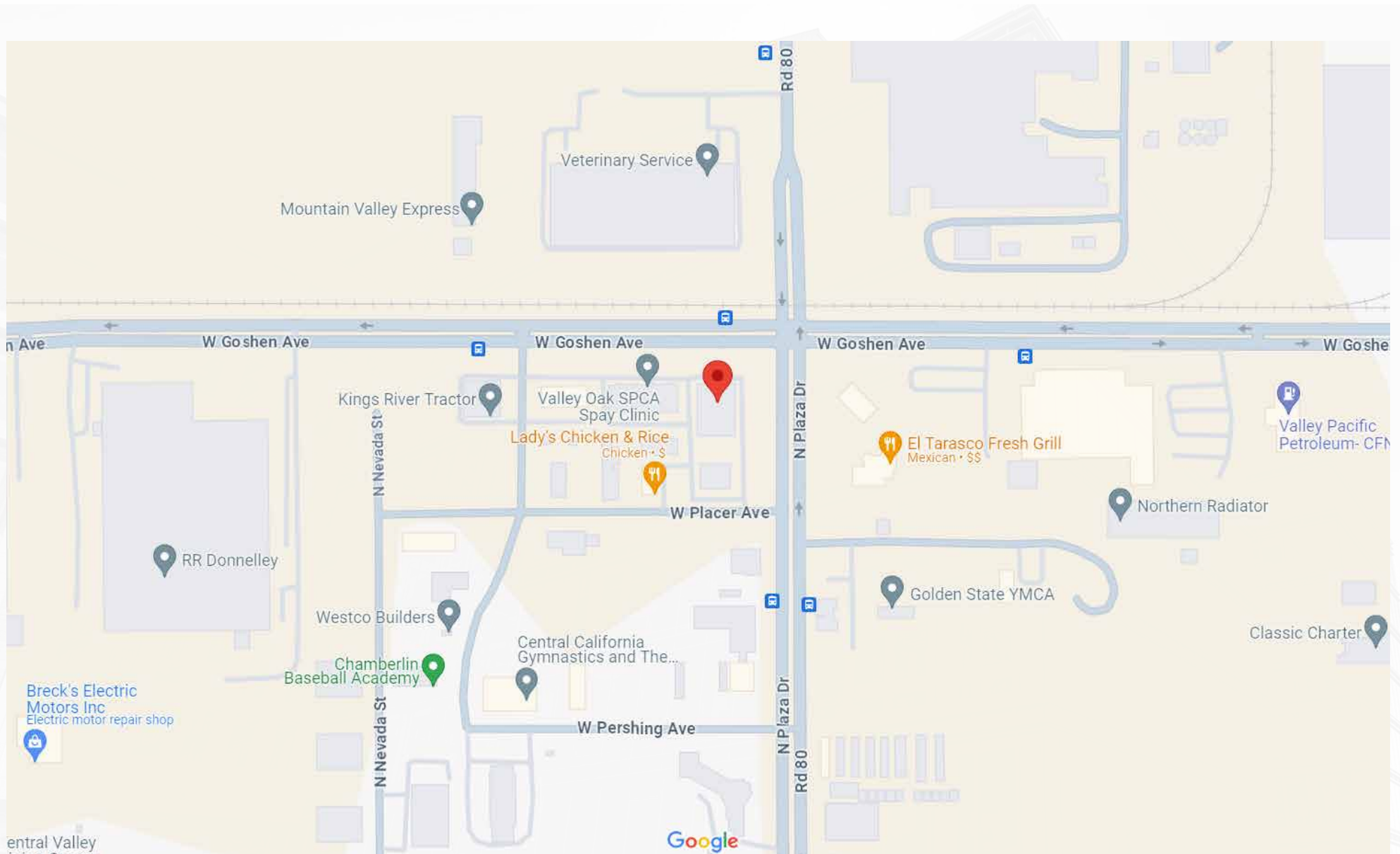
POPULATION

	1 Mile	3 Mile	5 Mile
2018 TOTAL POPULATION	10,587	72,322	131,771
Average Age	26.1	30.9	31.8
Average Age (Male)	25.6	30.3	31.0
Average Age (Female)	27.2	32.6	33.5

HOUSEHOLDS

	1 Mile	3 Mile	5 Mile
Total Households	2,906	22,900	43,502
# of Persons per HH	3.6	3.2	3.0
Average HH Income	\$48,244	\$64,358	\$66,694
Average House Value	\$177,045	\$263,934	\$276,893

FOR LEASE • 2,400 SF • Office or Retail w/Storage 1339 N. Plaza Blvd. Visalia, CA 93291



MARTY ZEEB | ZEEB COMMERCIAL BROKER
DRE# 00847045 - 559.625.2128 x11 - zeeb@aol.com

Note: This information is believed to be reliable, however broker makes no guarantee as to its current validity.

ZEEB
Commercial Real Estate
Visalia's Most Respected Commercial Real Estate Firm
132 N. Akers St., Visalia, CA 93291 • (559) 625-2128