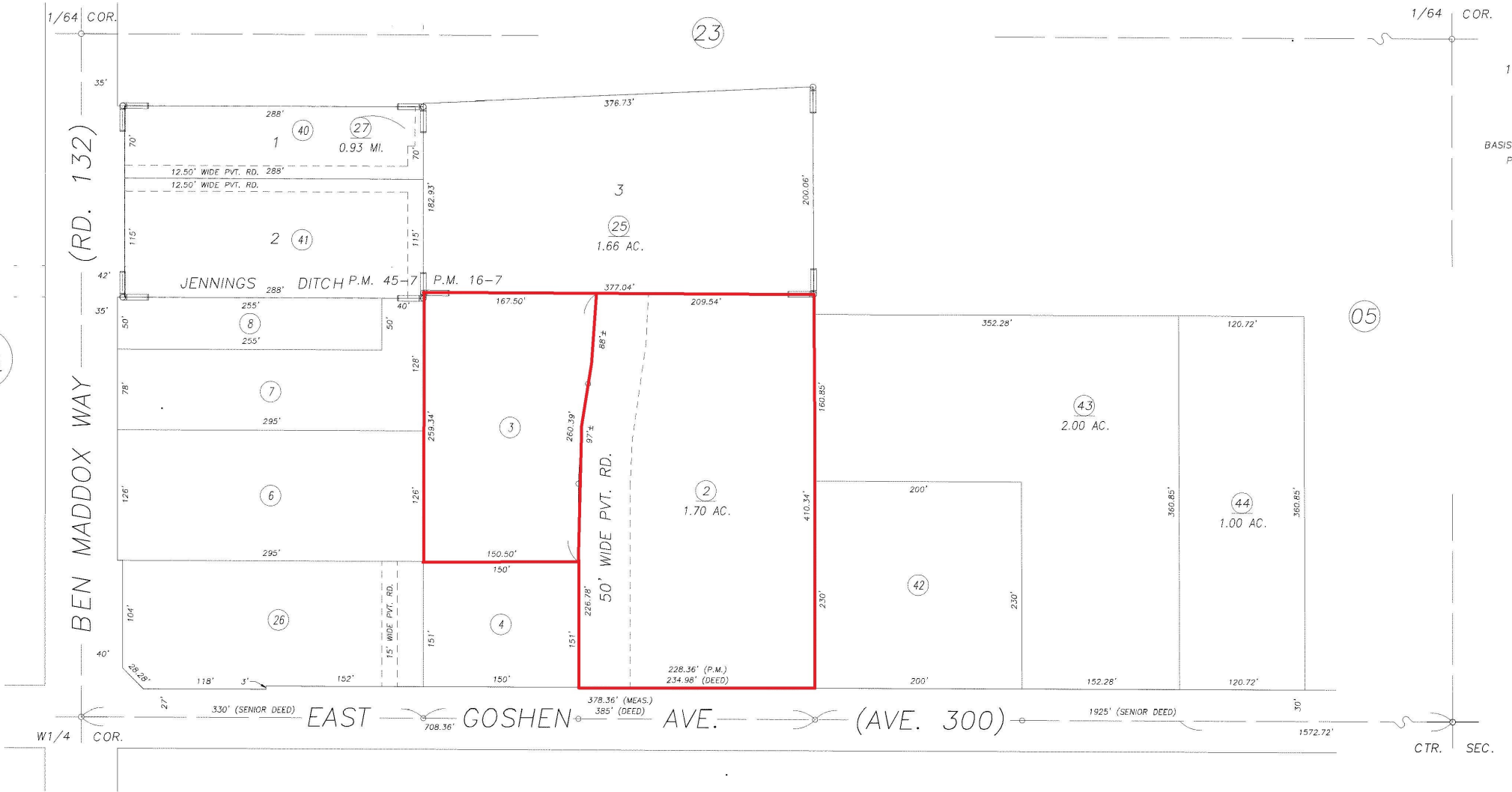


S1/2 OF SW1/4 OF NW1/4 SEC. 28, T.18S., R.25E., M.D.B.&M.

Tax Area Codes 098-006-096

DISCLAIMER
MAP WAS PREPARED FOR LOCAL
PROPERTY ASSESSMENT PURPOSES ONLY
THE PARCELS SHOWN HEREON MAY
NOT COMPLY WITH STATE AND LOCAL
DIVISION ORDINANCES, AND NO
LIABILITY IS ASSUMED FOR THE USE
OF THE INFORMATION SHOWN HEREON.
CALIFORNIA REVENUE AND TAX CODE SEC. 327, 408.3, ETC.



POR. PARCEL MAP NO. 1506, P.M. 16-7
PARCEL MAP NO. 4402, P.M. 45-07

CITY OF VISALIA
ASSESSOR'S MAPS BK.098 , PG.15
COUNTY OF TULARE, CALIFORNIA, U.S.A.

NOTE: Assessor's Parcel Numbers Shown in Circles
Assessor's Block Numbers Shown in Ellipses

1	123	INACTIVATED APN 14 05/14/201
		REVISION DATE