



215 E. KERN STREET

VACANT COMMERCIAL LAND

7,367± SF

TULARE, CA

AVAILABLE FOR SALE

For information, please contact:

MARC GRIFFITHS
SENIOR VICE PRESIDENT
t 559-625-2128
marc@zeebre.com
CA RE Lic. #01434697

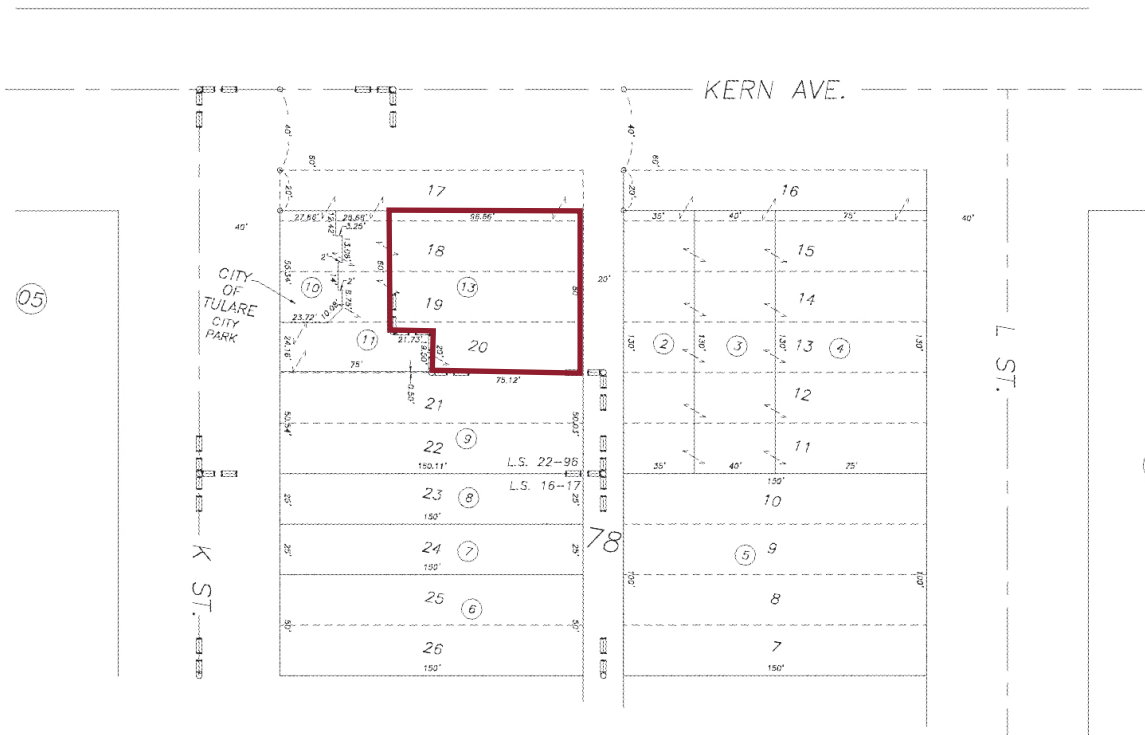
DESCRIPTION

Downtown Commercial parcel available for sale. Situated near the corner of South K Street and East Kern Avenue. This property has great access and visibility. Please contact Marc for details.

ZEEB
COMMERCIAL REAL ESTATE

Independently Owned and Operated | Corporate License #00020875 | zeebre.com
OFFICE: 3447 S. Demaree St., Visalia, CA 93277, t 559-625-2128

The distributor of this communication is performing acts for which a real estate license is required. The information contained herein has been obtained from sources deemed reliable but has not been verified and no guarantee, warranty or representation, either express or implied, is made with respect to such information. Terms of sale or lease and availability are subject to change or withdrawal without notice.



PROPERTY INFORMATION

Availability: 7,367± SF
Property Type: Vacant Land
Zoning: C-3 (*Retail Commercial*)
APN: 176-400-013 (*Tulare County*)
Purchase Price: \$180,000

For information, please contact:

MARC GRIFFITHS
 SENIOR VICE PRESIDENT
 t 559-625-2128
 marc@zeebre.com
 CA RE Lic. #01434697

HIGHLIGHTS

- Corner Location
- Prime Visibility
- Utilities to Site