

AVAILABLE FOR LEASE
9,000± SF INDUSTRIAL WAREHOUSE BUILDING

7411 W. SUNNYVIEW AVENUE
VISALIA, CA



For information, please contact:

MARTIN ZEEB, SIOR
ZEEB PEARSON COMMERCIAL
t 559-625-2128
marty@zeebre.com
CA RE Lic. #00847045

NICK AUDINO, SIOR
NEWMARK PEARSON COMMERCIAL
m 559-284-2396
naudino@pearsonrealty.com
CA RE Lic. #01231272

ZEEB
PEARSON COMMERCIAL

NEWMARK
PEARSON COMMERCIAL

Independently Owned and Operated | Corporate License #00020875 | **zeebre.com** | **newmarkpearson.com**
OFFICE: 3447 S. Demaree St., Visalia, CA 93277, t 559-625-2128

The distributor of this communication is performing acts for which a real estate license is required. The information contained herein has been obtained from sources deemed reliable but has not been verified and no guarantee, warranty or representation, either express or implied, is made with respect to such information. Terms of sale or lease and availability are subject to change or withdrawal without notice.

7411 W. SUNNYVIEW AVENUE VISALIA, CA

AVAILABLE FOR LEASE INDUSTRIAL WAREHOUSE BUILDING

INDUSTRIAL WAREHOUSE

9,000± SF

Building Size:	9,000± SF
Warehouse Space:	8,600 ± SF
Office Space:	400± SF
Ceiling Height:	20-24± FT
Grade Level Doors:	1
Dock High Doors:	Shared
Drive in Bays:	1
Parking:	21
Year Built:	1986
Zoning:	IH (<i>Heavy Industrial</i>)
APN:	077-200-011 (<i>Tulare County</i>)

PROPERTY DESCRIPTION

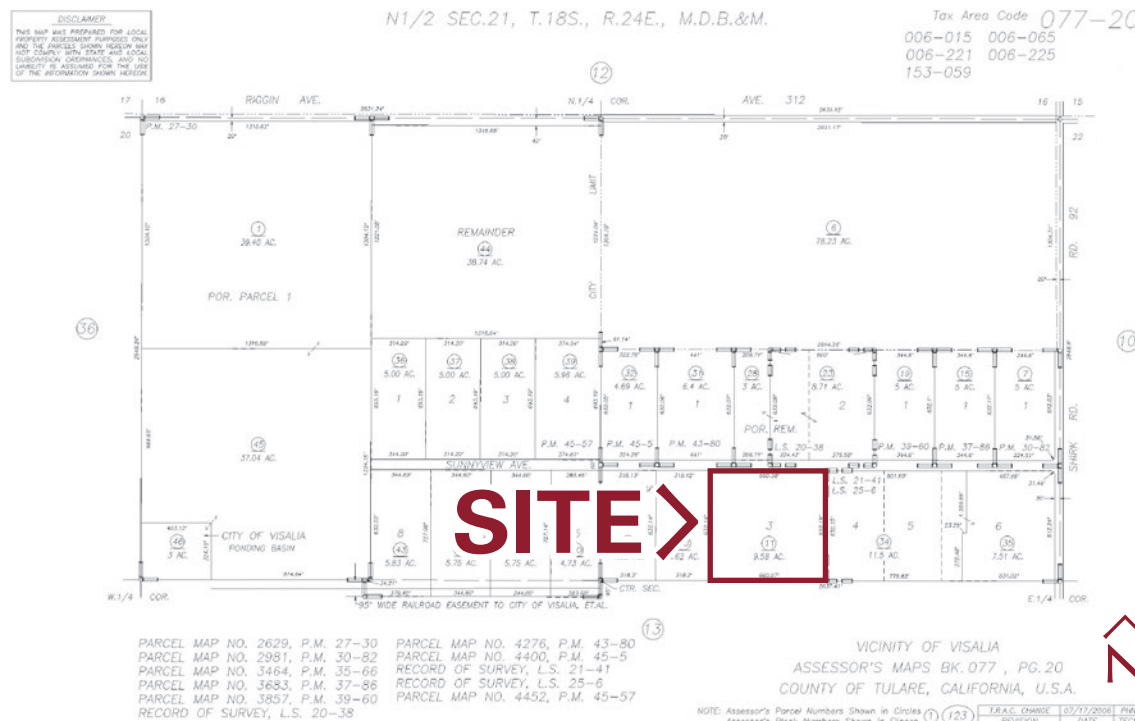
This is a hard to find smaller warehouse space. The warehouse has a roll-up door and includes three offices and restrooms. There is a common dock available.

LOCATION DESCRIPTION

Located in Visalia Industrial Park close to Highway 198 and the 99 freeway.

The space can be combined with 7411 W. Sunnyview Avenue for a total of 18,000sf for \$14,040/mo.

Available now, call to see. Shown by appointment only.



\$7,200 (\$0.80±PSF/MONTHLY)
MONTHLY

Modified Net
LEASE RATE

 **7411 W. SUNNYVIEW AVENUE**
VISALIA, CA

PROPERTY
PROPERTY PHOTOS





For information, please contact:

MARTIN ZEEB, SIOR
ZEEB PEARSON COMMERCIAL
t 559-625-2128
marty@zeebre.com
CA RE Lic. #00847045

NICK AUDINO, SIOR
NEWMARK PEARSON COMMERCIAL
m 559-284-2396
naudino@pearsonrealty.com
CA RE Lic. #01231272

ZEEB
PEARSON COMMERCIAL

NEWMARK
PEARSON COMMERCIAL

Independently Owned and Operated | Corporate License #00020875 | **zeebre.com** | **newmarkpearson.com**

OFFICE: 3447 S. Demaree St., Visalia, CA 93277, t 559-625-2128

The distributor of this communication is performing acts for which a real estate license is required. The information contained herein has been obtained from sources deemed reliable but has not been verified and no guarantee, warranty or representation, either express or implied, is made with respect to such information. Terms of sale or lease and availability are subject to change or withdrawal without notice.