

AVAILABLE FOR LEASE
OFFICE BUILDING | SUITE D

204 N FLORAL STREET
VISALIA, CA

For information, please contact:

MARC GRIFFITHS
SENIOR VICE PRESIDENT
t 559-625-2128
marc@zeebre.com
CA RE Lic. #01434697



Independently Owned and Operated | Corporate License #00020875 | zeebre.com

OFFICE: 3447 S. Demaree St., Visalia, CA 93277, t 559-625-2128

The distributor of this communication is performing acts for which a real estate license is required. The information contained herein has been obtained from sources deemed reliable but has not been verified and no guarantee, warranty or representation, either express or implied, is made with respect to such information. Terms of sale or lease and availability are subject to change or withdrawal without notice.

Available Space:	675± SF
Property Type:	Office Building
Year Built:	1977
Zoning:	C-MU (<i>Commercial Mixed Use</i>)
APN:	094-337-011 (<i>Tulare County</i>)
Lease Rate:	\$1,250 monthly
Parking:	Surface parking

PROPERTY DESCRIPTION

Well kept office complex located in downtown Visalia. Very clean office suite. Space includes open reception area, two private offices and a private restroom.

LOCATION DESCRIPTION

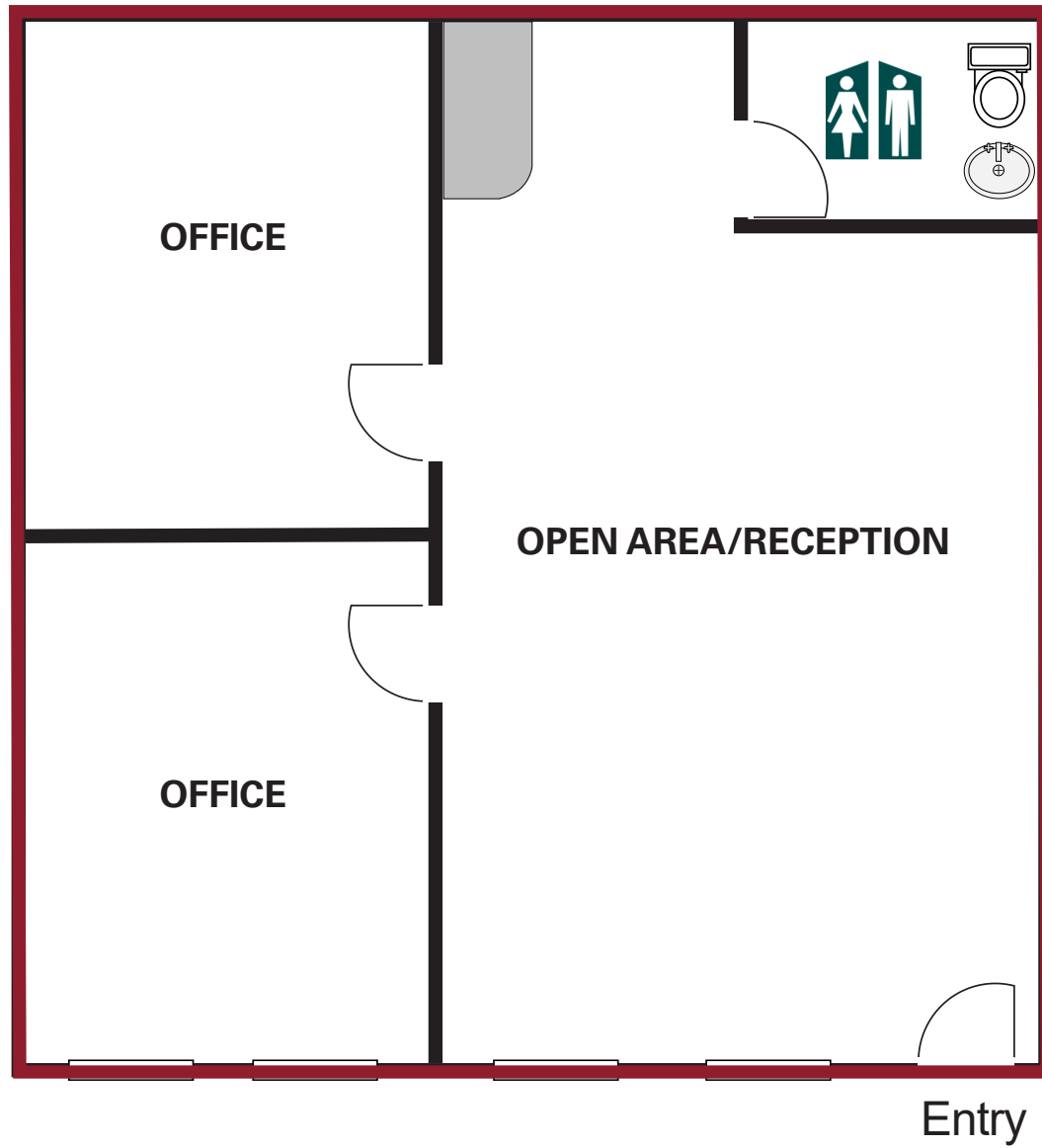
204 N Floral Street, Suite D.

Call Marc for details.



\$1,250
MONTHLY

MODIFIED GROSS
LEASE RATE





FLORAL STREET

CENTER AVENUE

MAIN STREET



For information, please contact:

MARC GRIFFITHS
SENIOR VICE PRESIDENT
559-625-2128
MARC@ZEEBRE.COM
CA RE Lic. #01434697



ZEEB
COMMERCIAL REAL ESTATE

Independently Owned and Operated | Corporate License #00020875 | zeebre.com

OFFICE: 3447 S. Demaree St., Visalia, CA 93277, t 559-625-2128

The distributor of this communication is performing acts for which a real estate license is required. The information contained herein has been obtained from sources deemed reliable but has not been verified and no guarantee, warranty or representation, either express or implied, is made with respect to such information. Terms of sale or lease and availability are subject to change or withdrawal without notice.