



CENTRAL PARK OFFICE COMPLEX

1720 W WALNUT AVENUE

VISALIA, CA

AVAILABLE FOR LEASE

HIGHLIGHTS

- 1,600± SF
- 6 Private Offices
- Conference Room
- Reception and Waiting Area
- Break Room
- Built-In Cabinets
- Common Restrooms

For information, please contact:

MARC GRIFFITHS
SENIOR VICE PRESIDENT
t 559-625-2128
marc@zeebre.com
CA RE Lic. #01434697

ZEEB
PEARSON COMMERCIAL

Independently Owned and Operated | Corporate License #00020875 | zeebre.com
OFFICE: 3447 S. Demaree St., Visalia, CA 93277, t 559-625-2128

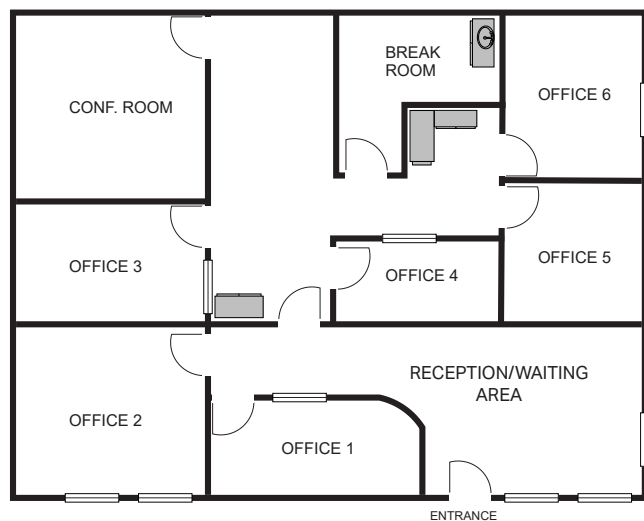
The distributor of this communication is performing acts for which a real estate license is required. The information contained herein has been obtained from sources deemed reliable but has not been verified and no guarantee, warranty or representation, either express or implied, is made with respect to such information. Terms of sale or lease and availability are subject to change or withdrawal without notice.



PROPERTY INFORMATION

Building Size:	1,600± SF
Lease Rate:	\$1.65/SF per month plus CAM
Property Type:	Professional Office
Year Built:	1992
Zoning:	PA (<i>Professional/ Administrative Office</i>)
APN:	096-292-024 (<i>Tulare County</i>)

Central Park is the only gated office park in Visalia and is centrally located near regional retail, downtown and Highway 198. Professional businesses located within the office park include; Chicago Title, insurance offices, real estate brokers, investment counselors and doctors.



For information, please contact:

MARC GRIFFITHS
 SENIOR VICE PRESIDENT
 t 559-625-2128
 marc@zeebre.com
 CA RE Lic. #01434697