

AVAILABLE FOR LEASE  
1,534± SF OFFICE SPACE

# 1398 E. TULARE AVENUE

TULARE, CA



*For information, please contact:*

**Mike Porte**

*Newmark Pearson Commercial*

t 559-302-1911

mporte@pearsonrealty.com

CA RE Lic. #01075873

**John Akers**

*Zeeb Pearson Commercial*

t 559-625-2128

john@zeebre.com

CA RE Lic. #00871521

**NEWMARK**  
PEARSON COMMERCIAL

**ZEEB**  
PEARSON COMMERCIAL

*Independently Owned and Operated* | Corporate License #00020875 | [newmarkpearson.com](http://newmarkpearson.com) | [zeebre.com](http://zeebre.com)

**FRESNO OFFICE:** 7480 N. Palm Ave. #101, Fresno, CA 93711, t 559-432-6200 | **VISALIA OFFICE:** 3447 S. Demaree St., Visalia, CA 93277, t 559-732-7300

The distributor of this communication is performing acts for which a real estate license is required. The information contained herein has been obtained from sources deemed reliable but has not been verified and no guarantee, warranty or representation, either express or implied, is made with respect to such information. Terms of sale or lease and availability are subject to change or withdrawal without notice.



**1398 E. TULARE AVENUE**  
TULARE, CA

**PROPERTY**  
INFORMATION

**Availability:** 1,534± SF  
**Tenancy:** Single  
**Year Built:** 2010  
**Zoning:** C-4 (*Service Commercial*)  
**APN:** 171-080-055 (*Tulare County*)

#### PROPERTY DESCRIPTION

Centrally located office building with 3 private offices. Easy access to Highway 99.

#### HIGHLIGHTS

- 3 Private Offices
- Large Conference/Break Room
- Reception Area
- Private Restroom
- Quick Access To Highway 99
- \$1.30/SF | 1,534± SF



**\$1,995.00**  
ASKING RENT

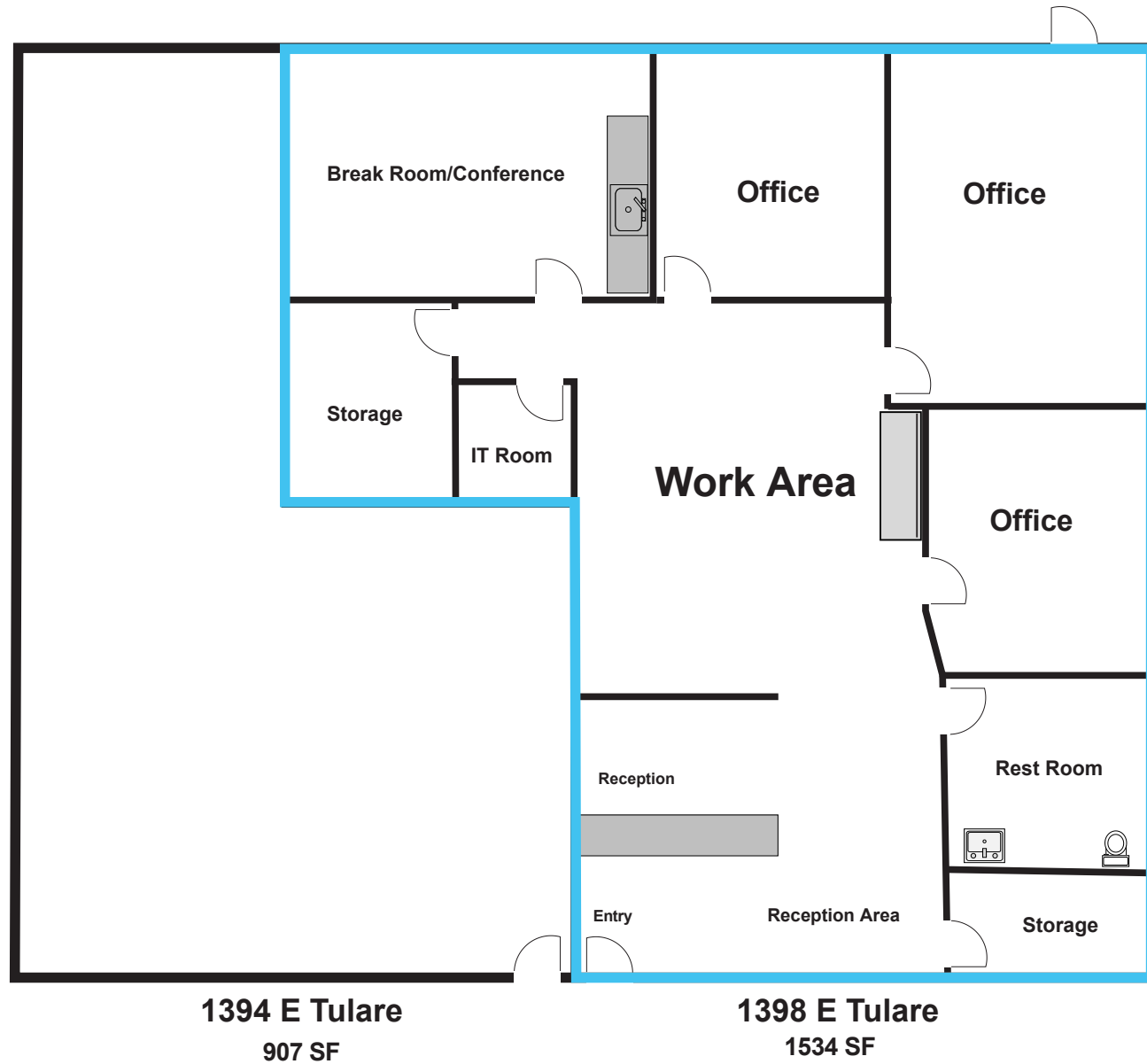
**Modified Gross**  
LEASE TYPE



**1398 E. TULARE AVENUE**  
TULARE, CA

**INTERIOR**  
PHOTOS

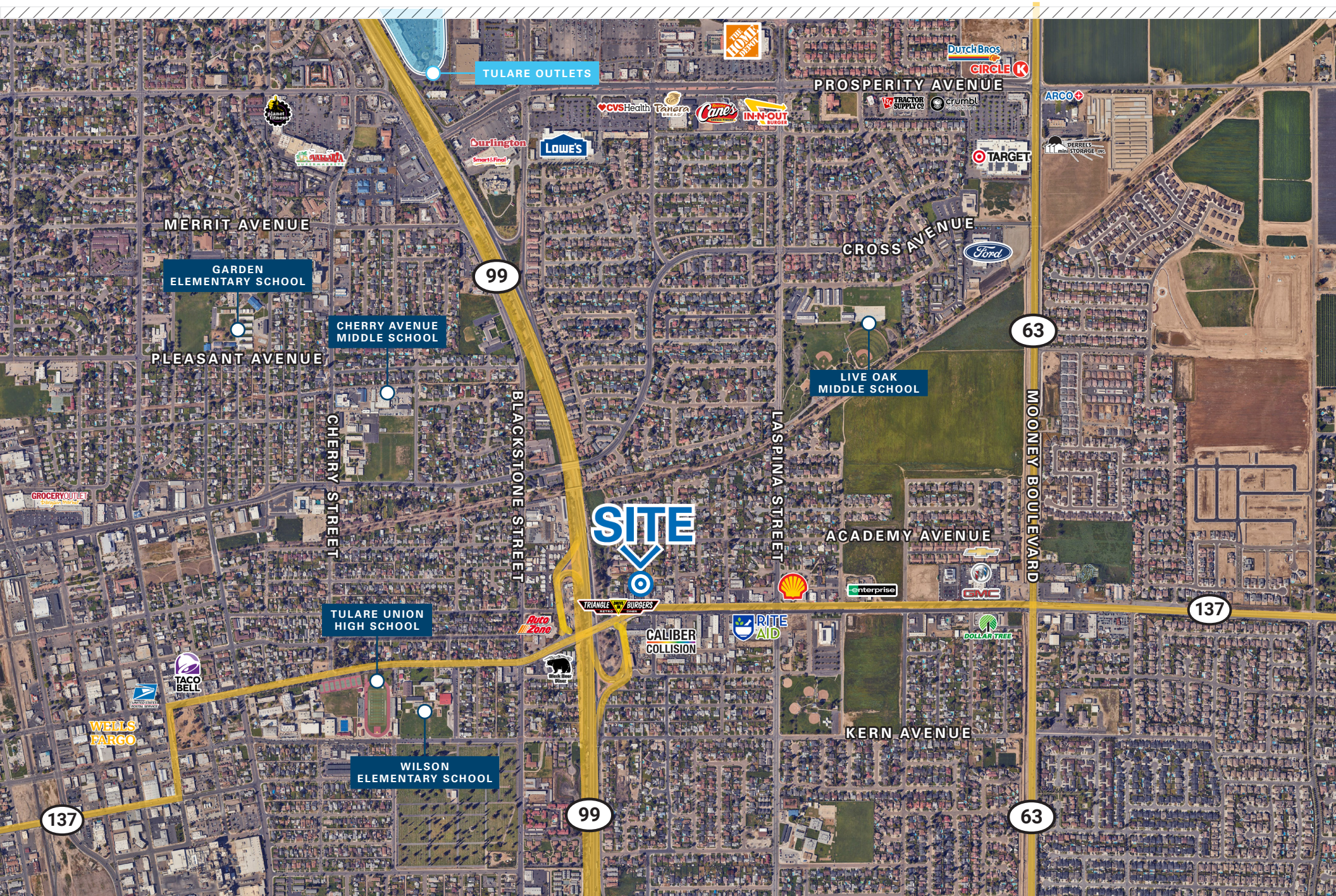






1398 E. TULARE AVENUE  
TULARE, CA

AERIAL  
MAP





AVAILABLE FOR LEASE  
2,410± SF OFFICE SPACE

1384-1386 E. TULARE AVENUE  
TULARE, CA

*For information, please contact:*

**Mike Porte**

*Newmark Pearson Commercial*  
t 559-972-2421  
mporte@pearsonrealty.com  
CA RE Lic. #01075873

**John Akers**

*Zeeb Pearson Commercial*  
t 559-625-2128  
john@zeebre.com  
CA RE Lic. #00871521

**NEWMARK**  
PEARSON COMMERCIAL

**ZEEB**  
PEARSON COMMERCIAL

*Independently Owned and Operated* | Corporate License #00020875 | [newmarkpearson.com](http://newmarkpearson.com) | [zeebre.com](http://zeebre.com)

**FRESNO OFFICE:** 7480 N. Palm Ave. #101, Fresno, CA 93711, t 559-432-6200 | **VISALIA OFFICE:** 3447 S. Demaree St., Visalia, CA 93277, t 559-732-7300  
The distributor of this communication is performing acts for which a real estate license is required. The information contained herein has been obtained from sources deemed reliable but has not been verified and no guarantee, warranty or representation, either express or implied, is made with respect to such information. Terms of sale or lease and availability are subject to change or withdrawal without notice.