

AVAILABLE FOR LEASE
OFFICE | 817± SF

1200 S. WOODLAND STREET, SUITE C

VISALIA, CA



For information, please contact:

MARC GRIFFITHS
SENIOR VICE PRESIDENT
t 559-625-2128
marc@zeebre.com
CA RE Lic. #01434697



Independently Owned and Operated | Corporate License #00020875 | **zeebre.com**

OFFICE: 3447 S. Demaree St., Visalia, CA 93277, t 559-625-2128

The distributor of this communication is performing acts for which a real estate license is required. The information contained herein has been obtained from sources deemed reliable but has not been verified and no guarantee, warranty or representation, either express or implied, is made with respect to such information. Terms of sale or lease and availability are subject to change or withdrawal without notice.

FLOOR PLAN

Available Space: 817± SF
Cross Street: Tulare Avenue
Property Type: Office Building
Zoning: O-C (*Office Conversion*)
APN: 095-120-087 (*Tulare County*)
Parking: On-site

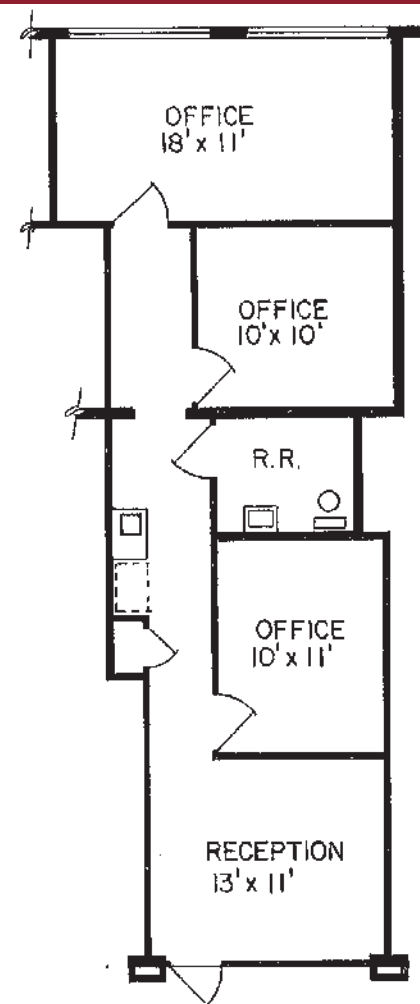
PROPERTY DESCRIPTION

Clean office suite located just off S. Mooney Blvd. available for lease. This space includes a reception area, 3 private offices and a private restroom. Parking available on-site.

LOCATION DESCRIPTION

Great office space located on the southeast corner of Woodland Street and Tulare Avenue just west of Mooney Boulevard.

Call Marc for details or to schedule a showing.



\$1,225
PER MONTH

MODIFIED GROSS
LEASE RATE



1200 S. WOODLAND STREET, SUITE C
VISALIA, CA

PROPERTY
PHOTO





For information, please contact:

MARC GRIFFITHS
SENIOR VICE PRESIDENT
559-625-2128
MARC@ZEEBRE.COM
CA DRE Lic. #01434697



Independently Owned and Operated | Corporate License #00020875 | zeebre.com

OFFICE: 3447 S. Demaree St., Visalia, CA 93277, t 559-625-2128

The distributor of this communication is performing acts for which a real estate license is required. The information contained herein has been obtained from sources deemed reliable but has not been verified and no guarantee, warranty or representation, either express or implied, is made with respect to such information. Terms of sale or lease and availability are subject to change or withdrawal without notice.