

AVAILABLE FOR SALE OR LEASE  
1,529± SF OFFICE BUILDING

# 2348 W. WHITENDALE AVENUE

VISALIA, CA

2348

2348



SUITE  
A  
SUITE  
A

*For information, please contact:*

**JOHN AKERS**  
SENIOR ASSOCIATE  
t 559-625-2128  
john@zeebre.com  
CA RE Lic. #00871521

**MARK SHELTON**  
SENIOR ASSOCIATE  
t 559-625-2128  
mshelton@pearsonrealty.com  
CA RE Lic. #01101900



**Independently Owned and Operated** | Corporate License #00020875 | [zeebre.com](http://zeebre.com)

**OFFICE:** 3447 S. Demaree St., Visalia, CA 93277, t 559-625-2128

The distributor of this communication is performing acts for which a real estate license is required. The information contained herein has been obtained from sources deemed reliable but has not been verified and no guarantee, warranty or representation, either express or implied, is made with respect to such information. Terms of sale or lease and availability are subject to change or withdrawal without notice.

**Available Space:** 1,529± SF  
**Cross Street:** Mooney Boulevard  
**Property Type:** Office Building  
**Year Built:** 1986  
**Zoning:** C-MU (*Commercial Mixed-Use*)  
**APN:** 121-380- 008 (*Tulare County*)  
**Parking:** On-site

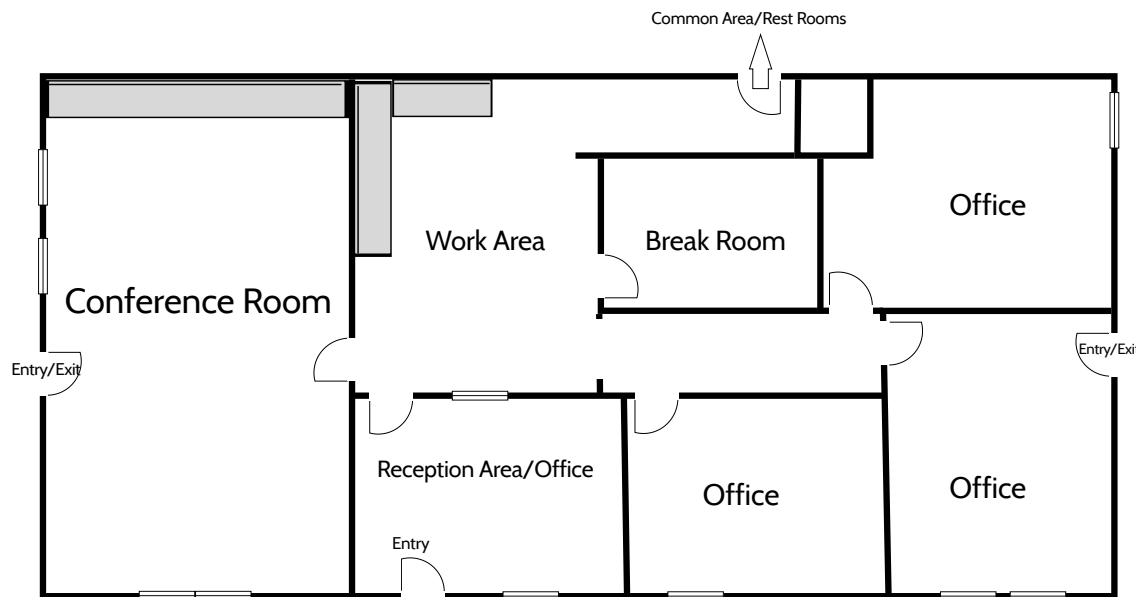
#### PROPERTY DESCRIPTION

The building has three private offices, a huge conference room (that was previously two additional offices), a reception area, break room, and common private restrooms. 1,529±SF plus common restrooms. Lease rate is \$1.30 per SF or \$1,987.70 per month. Sales price is \$299,950.

#### LOCATION DESCRIPTION

Great office space for sale or lease located on Whitendale just west of Mooney Boulevard.

*Call for details or to schedule a showing.*



**\$299,950**  
ASKING PRICE

**\$1.30**  
PER SF

**Modified Gross**  
LEASE RATE



2348 W. WHITENDALE AVENUE, SUITE A  
VISALIA, CA

PROPERTY  
PHOTOS







*For information, please contact:*

**JOHN AKERS**  
SENIOR ASSOCIATE  
559-625-2128  
JOHN@ZEEBRE.COM  
CA DRE Lic. #00871521

**MARK SHELTON**  
SENIOR ASSOCIATE  
559-625-2128  
MSHELTON@PEARSONREALTY.CO,  
CA DRE Lic. #01101900



*Independently Owned and Operated* | Corporate License #00020875 | [zeebre.com](http://zeebre.com)

**OFFICE:** 3447 S. Demaree St., Visalia, CA 93277, t 559-625-2128

The distributor of this communication is performing acts for which a real estate license is required. The information contained herein has been obtained from sources deemed reliable but has not been verified and no guarantee, warranty or representation, either express or implied, is made with respect to such information. Terms of sale or lease and availability are subject to change or withdrawal without notice.