

AVAILABLE FOR LEASE
80,640± SF INDUSTRIAL BUILDING ON 6.2± ACRES

700 E. CONTINENTAL AVENUE
TULARE, CA

For information, please contact:

MARTIN ZEEB
SENIOR VICE PRESIDENT
t 559-625-2128
zeeb@aol.com
CA RE Lic. #00847045

ZEEB
PEARSON COMMERCIAL

Independently Owned and Operated | Corporate License #00020875 | zeebre.com

OFFICE: 3447 S. Demaree St., Visalia, CA 93277, t 559-625-2128

The distributor of this communication is performing acts for which a real estate license is required. The information contained herein has been obtained from sources deemed reliable but has not been verified and no guarantee, warranty or representation, either express or implied, is made with respect to such information. Terms of sale or lease and availability are subject to change or withdrawal without notice.

700 E. CONTINENTAL AVENUE
TULARE, CA

**PROPERTY
INFORMATION**

Available Space: 80,640± SF
Property Type: Industrial warehouse
Zoning: M-2 (*Heavy Industrial*)
APN: 181-090-043 (*Tulare County*)

PROPERTY OVERVIEW

Located in the heart of Tulare's industrial and food storage district at the corner of O Street and Continental Avenue, this concrete tilt up warehouse features 5 dock high doors, 1 grade level door, a shop office, 73+ parking stalls, and spacious truck courts.

The building measures 280' × 288' (80,640± SF) with polished floors, food grade sealing, 40' column spacing, and a 24' clear height—ideal for food grade operations or general warehousing.

Available April 1, 2026.

Call for details or to schedule a showing.



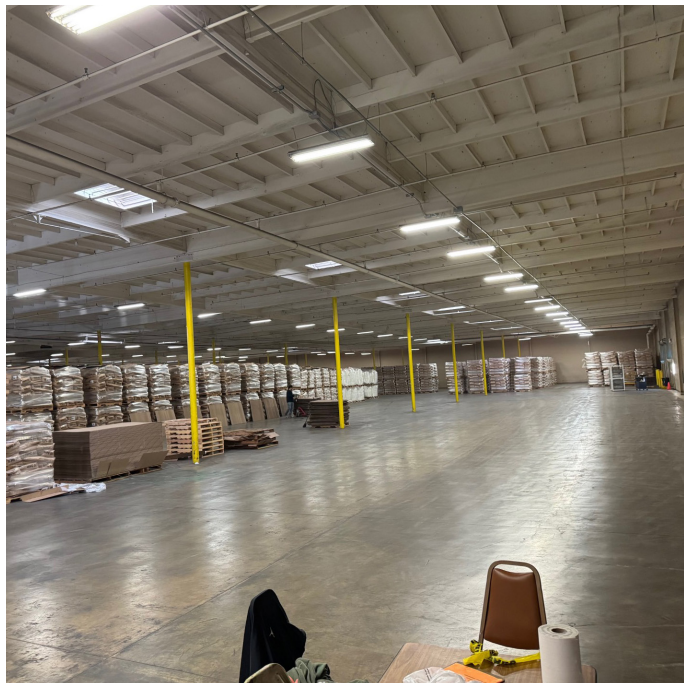
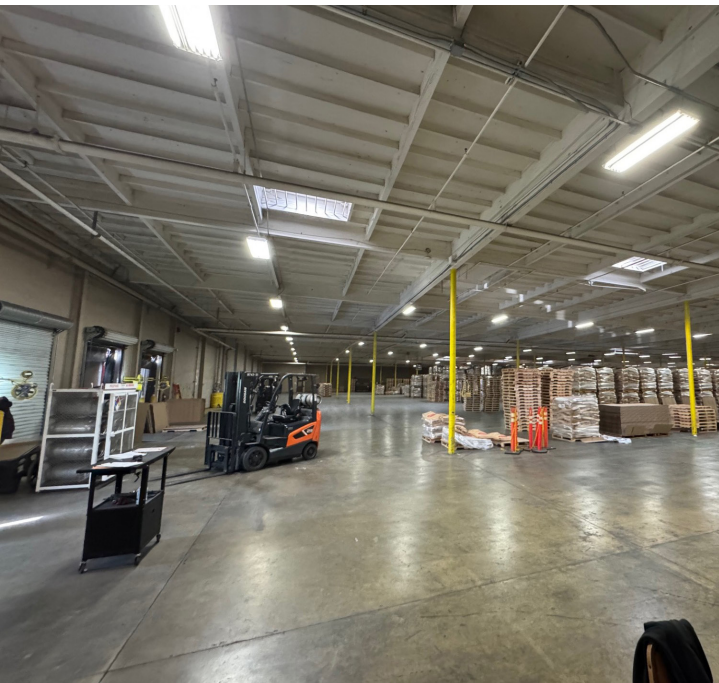
\$0.60
PSF MONTHLY



NNN
LEASE RATE

700 E. CONTINENTAL AVENUE
TULARE, CA

PROPERTY
PHOTOS





For information, please contact:

MARTIN ZEEB, SIOR
SENIOR VICE PRESIDENT
559-625-2128
zeeb@aol.com
CA RE Lic. #00847045



Independently Owned and Operated | Corporate License #00020875 | zeebre.com
OFFICE: 3447 S. Demaree St., Visalia, CA 93277, t 559-625-2128
The distributor of this communication is performing acts for which a real estate license is required. The information contained herein has been obtained from sources deemed reliable but has not been verified and no guarantee, warranty or representation, either express or implied, is made with respect to such information. Terms of sale or lease and availability are subject to change or withdrawal without notice.