

**AVAILABLE FOR LEASE**  
**80,640± SF INDUSTRIAL BUILDING ON 6.2± ACRES**

**700 E. CONTINENTAL AVENUE**  
**TULARE, CA**

*For information, please contact:*

**MARTIN ZEEB**  
**SENIOR VICE PRESIDENT**  
t 559-625-2128  
zeeb@aol.com  
CA RE Lic. #00847045

**ZEEB**  
**PEARSON COMMERCIAL**

*Independently Owned and Operated* | Corporate License #00020875 | [zeebre.com](http://zeebre.com)  
**OFFICE:** 3447 S. Demaree St., Visalia, CA 93277, t 559-625-2128

The distributor of this communication is performing acts for which a real estate license is required. The information contained herein has been obtained from sources deemed reliable but has not been verified and no guarantee, warranty or representation, either express or implied, is made with respect to such information. Terms of sale or lease and availability are subject to change or withdrawal without notice.

**Available Space:** 80,640± SF  
**Property Type:** Industrial warehouse  
**Zoning:** M-2 (*Heavy Industrial*)  
**APN:** 181-090-043 (*Tulare County*)

#### PROPERTY OVERVIEW

Located in the heart of Tulare's industrial and food storage district at the corner of O Street and Continental Avenue, this concrete tilt up warehouse features 5 dock high doors, 1 grade level door, a shop office, 73+ parking stalls, and spacious truck courts.

The building measures 280' × 288' (80,640± SF) with polished floors, food grade sealing, 40' column spacing, and a 24' clear height—ideal for food grade operations or general warehousing.

Available April 1, 2026.

*Call for details or to schedule a showing.*



**\$0.60**  
PSF MONTHLY

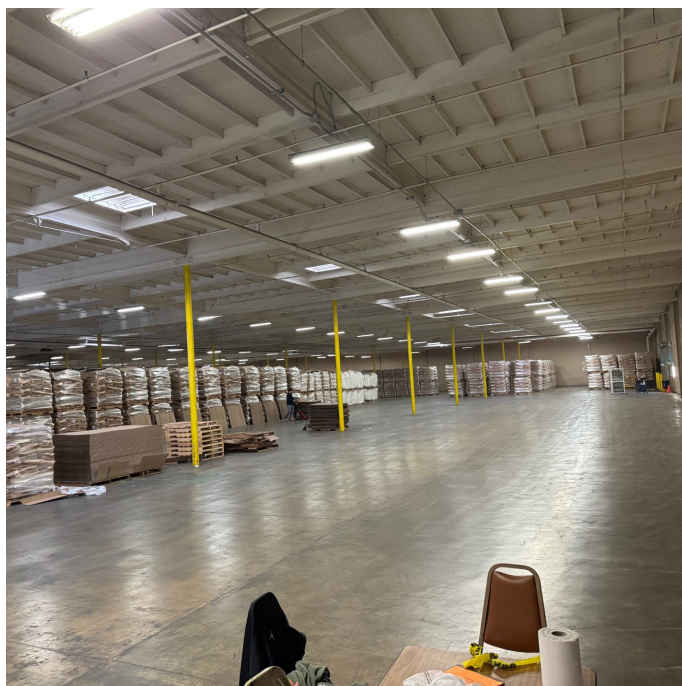
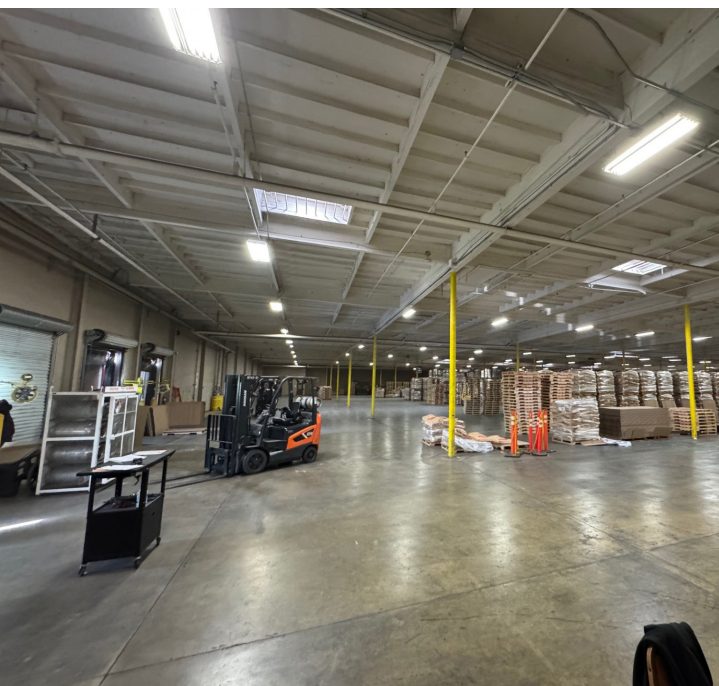
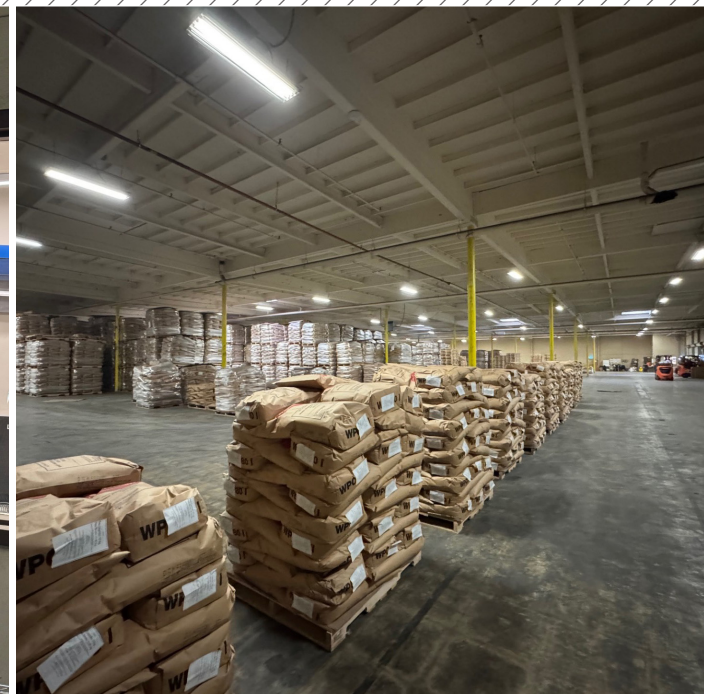


**NNN**  
LEASE RATE



 **700 E. CONTINENTAL AVENUE**  
TULARE, CA

**PROPERTY**  
PHOTOS







*For information, please contact:*

**MARTIN ZEEB, SIOR**  
SENIOR VICE PRESIDENT  
559-625-2128  
zeeb@aol.com  
CA RE Lic. #00847045



*Independently Owned and Operated* | Corporate License #00020875 | [zeebre.com](http://zeebre.com)

**OFFICE:** 3447 S. Demaree St., Visalia, CA 93277, t 559-625-2128

The distributor of this communication is performing acts for which a real estate license is required. The information contained herein has been obtained from sources deemed reliable but has not been verified and no guarantee, warranty or representation, either express or implied, is made with respect to such information. Terms of sale or lease and availability are subject to change or withdrawal without notice.