

AVAILABLE FOR LEASE
PROFESSIONAL OFFICE SPACE

1288 N. IRWIN STREET
HANFORD, CA

FOR LEASE
ZEEB
PEARSON COMMERCIAL
John Akers Marc Griffiths
559-625-2128

For information, please contact:

MARC GRIFFITHS
SENIOR VICE PRESIDENT
t 559-625-2128
marc@zeebre.com
CA RE Lic. #01434697

JOHN AKERS
SENIOR ASSOCIATE
t 559-625-2128
john@zeebre.com
CA RE Lic. #00871521

ZEEB
PEARSON COMMERCIAL

Independently Owned and Operated | Corporate License #00020875 | zeebre.com

OFFICE: 3447 S. Demaree St., Visalia, CA 93277, t 559-625-2128

The distributor of this communication is performing acts for which a real estate license is required. The information contained herein has been obtained from sources deemed reliable but has not been verified and no guarantee, warranty or representation, either express or implied, is made with respect to such information. Terms of sale or lease and availability are subject to change or withdrawal without notice.

Available Space: 2,580± SF
Property Type: Professional Office
Zoning: O-R (*Office Residential*)
APN: 010-105-014 (*Kings County*)

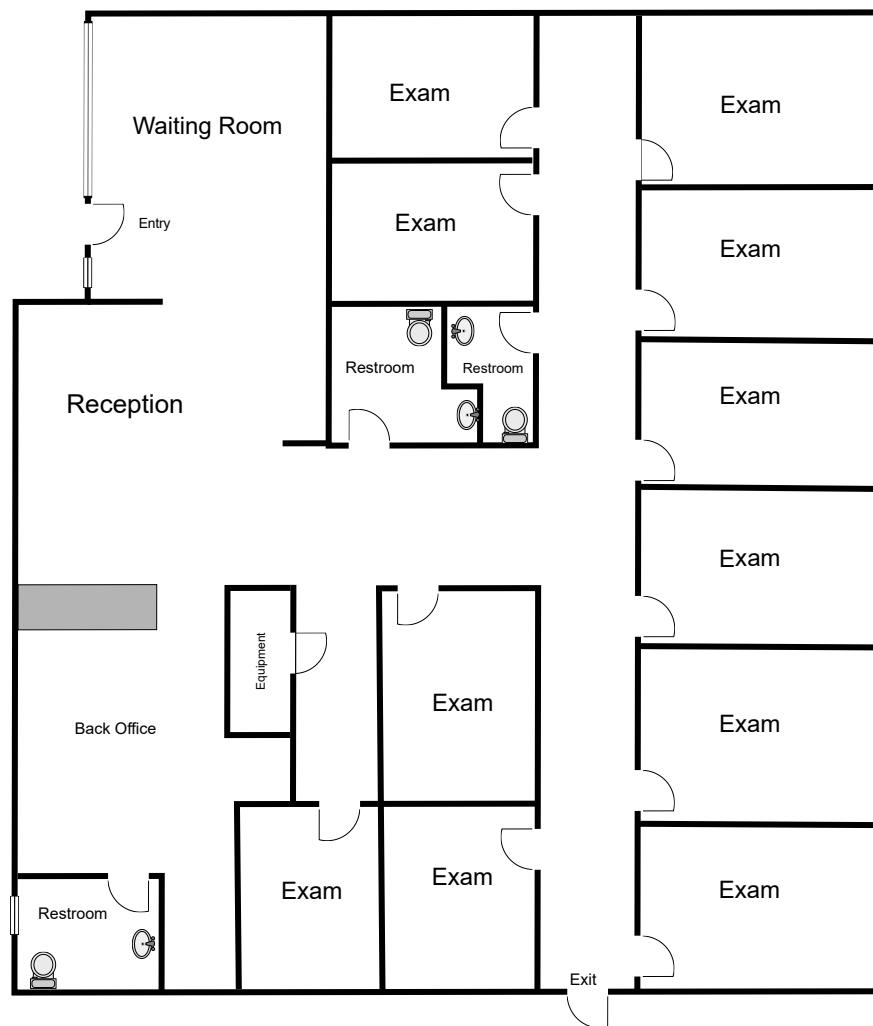
PROPERTY DESCRIPTION

This completely remodeled building is well suited for a medium to large sized medical practice. There is a large waiting room and reception area, 9 exam rooms, break room, private doctor's office, 3 restrooms, and a back office. Improvements include new flooring, interior paint, electrical, plumbing, and HVAC. Don't miss this opportunity to locate or relocate your medical practice to Hanford.

LOCATION DESCRIPTION

Located at 1288 N. Irwin Street in close proximity to several medical and dental offices. Easy access to Hwy 198 in Hanford.

Call for details or to schedule a showing.



\$2.15
PER SF

NNN
LEASE RATE



1288 N. IRWIN STREET
HANFORD, CA

LOCATION
MAP





For information, please contact:

MARC GRIFFITHS
SENIOR VICE PRESIDENT
559-625-2128
MARC@ZEEB.COM
CA RE Lic. #01434697

JOHN AKERS
SENIOR ASSOCIATE
559-625-2128
JOHN@ZEEBRE.COM
CA RE Lic. #00871521



Independently Owned and Operated | Corporate License #00020875 | zeebre.com
OFFICE: 3447 S. Demaree St., Visalia, CA 93277, t 559-625-2128
The distributor of this communication is performing acts for which a real estate license is required. The information contained herein has been obtained from sources deemed reliable but has not been verified and no guarantee, warranty or representation, either express or implied, is made with respect to such information. Terms of sale or lease and availability are subject to change or withdrawal without notice.