

AVAILABLE FOR LEASE
2,400± SF OFFICE INDUSTRIAL

1335 N. PLAZA DRIVE
VISALIA, CA



For information, please contact:

MARTIN ZEEB, SIOR
SENIOR VICE PRESIDENT
t 559-625-2128
marty@zeebre.com
CA RE Lic. #00847045

JOHN AKERS
SENIOR SALES ASSOCIATE
t 559-625-2128
john@zeebre.com
CA RE Lic. #00871521

ZEEB
PEARSON COMMERCIAL

Independently Owned and Operated | Corporate License #00020875 | zeebre.com

OFFICE: 3447 S. Demaree St., Visalia, CA 93277, t 559-625-2128

The distributor of this communication is performing acts for which a real estate license is required. The information contained herein has been obtained from sources deemed reliable but has not been verified and no guarantee, warranty or representation, either express or implied, is made with respect to such information. Terms of sale or lease and availability are subject to change or withdrawal without notice.

Total Building Size: 14,400± SF
Available Space: 2,400± SF
Zoning: I (*Industrial*)
APN: 081-100-017 (*Tulare County*)

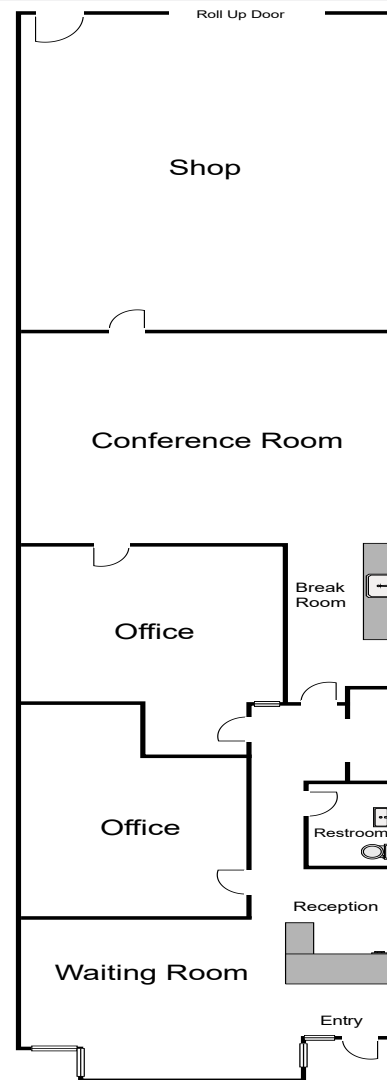
PROPERTY DESCRIPTION

This hard-to-find flex space, located in Visalia's Industrial Park, will be available July 1st, 2026 so don't miss this opportunity to locate your business in this complex with some of the most desirable street frontage in the Visalia Industrial Park. The space has a reception area, two offices, a large conference room, break area, private restroom, and a 720±SF shop with a roll up door and a man door. Perfect for any number of business uses.

LOCATION DESCRIPTION

Located at 1335 N. Plaza Drive in Visalia's Industrial Park with easy access to Highway 99.

Call for more information or to schedule an appointment to see.



\$0.90
PER SQUARE FOOT

NNN
LEASE RATE

1335 N. PLAZA DRIVE
VISALIA, CA

PROPERTY
PHOTOS





For information, please contact:

MARTIN ZEEB, SIOR
SENIOR VICE PRESIDENT
559-625-2128
MARTY@ZEEB.COM
CA RE Lic. #00847045

JOHN AKERS
SENIOR ASSOCIATE
559-625-2128
JOHN@ZEEBRE.COM
CA RE Lic. #00871521



Independently Owned and Operated | Corporate License #00020875 | zeebre.com
OFFICE: 3447 S. Demaree St., Visalia, CA 93277, t 559-625-2128
The distributor of this communication is performing acts for which a real estate license is required. The information contained herein has been obtained from sources deemed reliable but has not been verified and no guarantee, warranty or representation, either express or implied, is made with respect to such information. Terms of sale or lease and availability are subject to change or withdrawal without notice.