

AVAILABLE FOR SALE
16.38± ACRES COMMERCIAL LAND

SEC 12TH AND HWY 198

VISALIA, CA

SITE

12TH AVENUE

198

For information, please contact:

MARC GRIFFITHS
ZEEB PEARSON COMMERCIAL
t 559-625-2128
marc@zeebre.com
CA RE Lic. #01434697

MICHAEL PORTE
NEWMARK PEARSON COMMERCIAL
t 559-972-2421
mporte@pearsonrealty.com
CA RE Lic. #01075873

ZEEB
PEARSON COMMERCIAL

NEWMARK
PEARSON COMMERCIAL

Independently Owned and Operated | Corporate License #00020875 | zeebre.com | newmarkpearson.com

OFFICE: 3447 S. Demaree St., Visalia, CA 93277, t 559-625-2128

The distributor of this communication is performing acts for which a real estate license is required. The information contained herein has been obtained from sources deemed reliable but has not been verified and no guarantee, warranty or representation, either express or implied, is made with respect to such information. Terms of sale or lease and availability are subject to change or withdrawal without notice.

SEC 12TH AVENUE AND HIGHWAY 198

HANFORD, CA

PROPERTY INFORMATION

Lot Size: 16.38± acres
Zoning: Regional Commercial
APN: 011-060-010 and 011 (Kings County)

PROPERTY DESCRIPTION

16.38± acres with excellent Highway 198 visibility and access next to 12th Avenue on-ramp. Property is zoned for Regional Commercial due to the prime location and other Regional Retail in the area. Adventist Hospital is just on the north side of Highway 198 and Hanford is the County Seat for Kings County with county offices and the court house located in Hanford. Hanford is the largest city in Kings County. Easy access from 12th Avenue.

POSSIBLE USES

Daycare, Pharmacy, Urgent Care, Health and fitness, Night Club, Brew pub, Micro Brewery, Hotel/Motel, Home improvement store, Convenience store, Grocery store, Furniture store, Car wash, Restaurant full service and drive-thru, Professional school, Theater/Movie, Call Center, Veterinary Clinic and more.

LOCATION DESCRIPTION

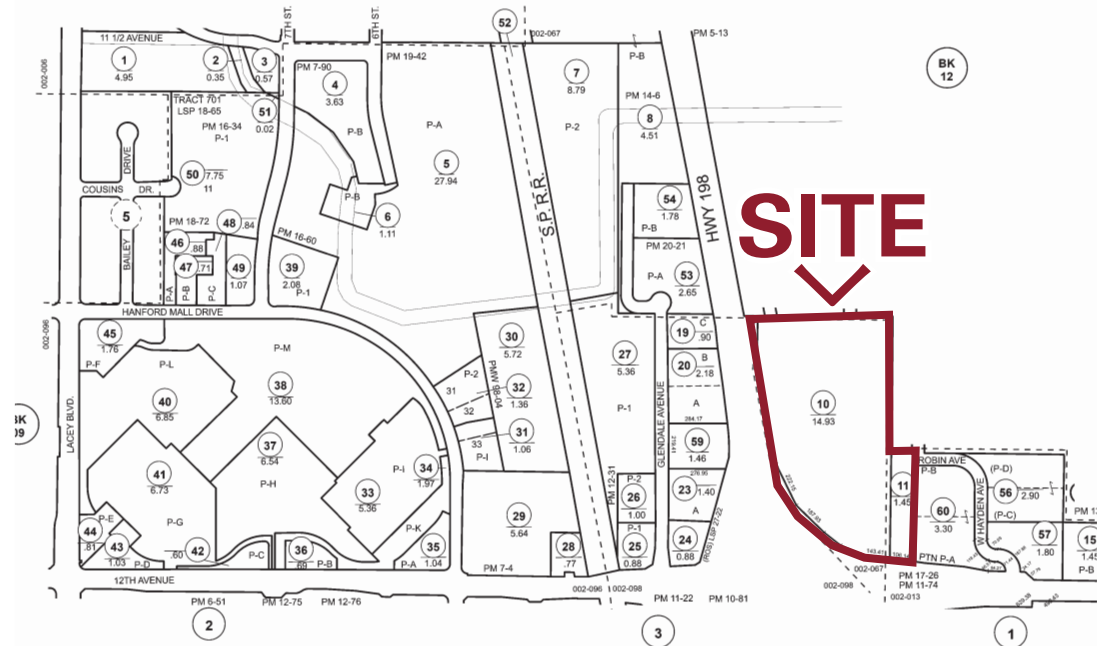
Located at the high traffic area of 12th Avenue in the Hanford Regional Corridor. Easy access from 12th Avenue and Highway 198.

Call for details or to schedule a showing.

KINGS COUNTY ASSESSOR'S MAP

W 1/2 SEC. 35-18-21

FOR ASSESSMENT PURPOSES ONLY.
TO BE CONSTRUED AS PORTRAYING
SHIP OF DIVISIONS OF LAND FOR
ZONING OR SUBDIVISION LAW.



Kings County Assessor's Office



\$2,750,000
PURCHASE PRICE

| | DEMOGRAPHICS | 1 MILE RADIUS | 3 MILE RADIUS | 5 MILE RADIUS |
|-------------------|--------------------------------------|----------------------|----------------------|----------------------|
| POPULATION | 2030 Projection | 10,115 | 57,191 | 71,653 |
| | 2025 Estimate | 9,933 | 56,208 | 70,848 |
| | Average Age 2025 Est. | 34.30 | 35.88 | 36.28 |
| HOUSEHOLD | 2030 Households Projection | 3,026 | 18,628 | 23,740 |
| | 2025 Est. Households by HH Income | 2,954 | 18,222 | 23,373 |
| | 2025 Average Household Income | \$81,258 | \$89,319 | \$93,544 |

Source: Claritas, LLC 2025



TRAFFIC COUNTS
(Within a One Mile Radius)

39,595± ADT

Highway 198 (Southeast)

37,822± ADT

12th and Highway (North)

Source: KalibrateTrafficMatrix



For information, please contact:

MARC GRIFFITHS
 ZEEB PEARSON COMMERCIAL
 559-625-2128
 MARC@ZEEB.COM
 CA RE Lic. #01434697

MICHAEL PORTE
 NEWMARK PEARSON COMMERCIAL
 559-972-2421
 MPORTE@PEARSONREALTY.COM
 CA RE Lic. #01075873



Independently Owned and Operated | Corporate License #00020875 | zeebre.com | newmarkpearson.com
OFFICE: 3447 S. Demaree St., Visalia, CA 93277, t 559-625-2128
 The distributor of this communication is performing acts for which a real estate license is required. The information contained herein has been obtained from sources deemed reliable but has not been verified and no guarantee, warranty or representation, either express or implied, is made with respect to such information. Terms of sale or lease and availability are subject to change or withdrawal without notice.